

En vrac, quelques notes glanées ici ou là

... et traduites par mes soins...

Créer un multiboot USB

http://limitless-power.blogspot.com/2009/05/creating-multiboot-usb-drive-part-two_12.html

Introduction

Les netbooks, malgré leur popularité croissante, ont un inconvénient : la difficulté d'installer un système d'exploitation sans lecteur optique (CD ou DVD). On contourne traditionnellement ce problème en faisant une installation réseau, par exemple à l'aide d'outils comme Microsoft Remote Installation ou Windows Deployment Services, ce qui est bien si on a l'infrastructure en place, mais mettre en place un domaine et ensuite créer des images est un processus long pour l'utilisateur moyen si tout ce qu'il veut faire est d'installer Windows sur un nouvel ordinateur. Une solution populaire consiste à faire l'installation à partir d'une clé USB. Des applications disponibles sur Internet transforment une clé USB standard en un disque amorçable, à partir duquel on peut installer Windows.

D'où l'idée d'avoir un lecteur USB avec toutes les versions de Windows qu'on installe régulièrement... Nous allons créer une clé USB avec les systèmes d'exploitation suivants :

- Windows XP Professionnel x86 avec le Service Pack 3
- Windows XP Professional x64 avec le SP2
- Windows Vista Starter, Home Basic, Home Premium, Professionnel, Intégrale et Entreprise avec SP1 x86
- Windows Vista Édition Familiale Basique, Familiale Premium, Professionnel, Intégrale et Entreprise x64 avec SP1
- Windows Server 2008 Standard, Enterprise, Datacenter complète et Server Core x86 et x64

Ce qui fait, si je compte bien, 13 clients et 12 systèmes d'exploitation serveur, le tout installable à partir d'une seule clé usb de 8 Go. On peut aussi créer une clé USB bootable avec ce qui figure ci-dessus, ainsi qu'un certain nombre d'utilitaires supplémentaires, notamment :

- [Acronis True Image Server](#)
- [memtest](#)
- [GParted](#)
- WinPE,
- [Ultimate Boot CD](#)
- [BartPE](#)

C'est un outil extrêmement puissant, en particulier pour les informaticiens professionnels qui doivent travailler sur une gamme de systèmes qui n'ont pas de lecteur optique, ou tout simplement ne

veulent pas transporter sans cesse une dizaine de disques avec eux.

La majorité des méthodes décrites proviennent de différentes sources sur Internet, principalement les forums msfn.org.

Préparation du lecteur USB

Éléments essentiels et logiciels pour cette étape :

- Une clé USB (ou un disque dur externe - les deux conviennent) assez grand pour contenir les installateurs des OS avec, si on veut, des outils. Dans cet exemple, nous allons utiliser une clé de 4 Go.
- L'outil HP USB Disk Storage Format - disponible [ici](#) et sur d'autres sources sur Internet.
- du temps (au moins 15 minutes pour cette étape)

Il faut faire plusieurs opérations pour préparer votre clé USB pour l'amorçage.

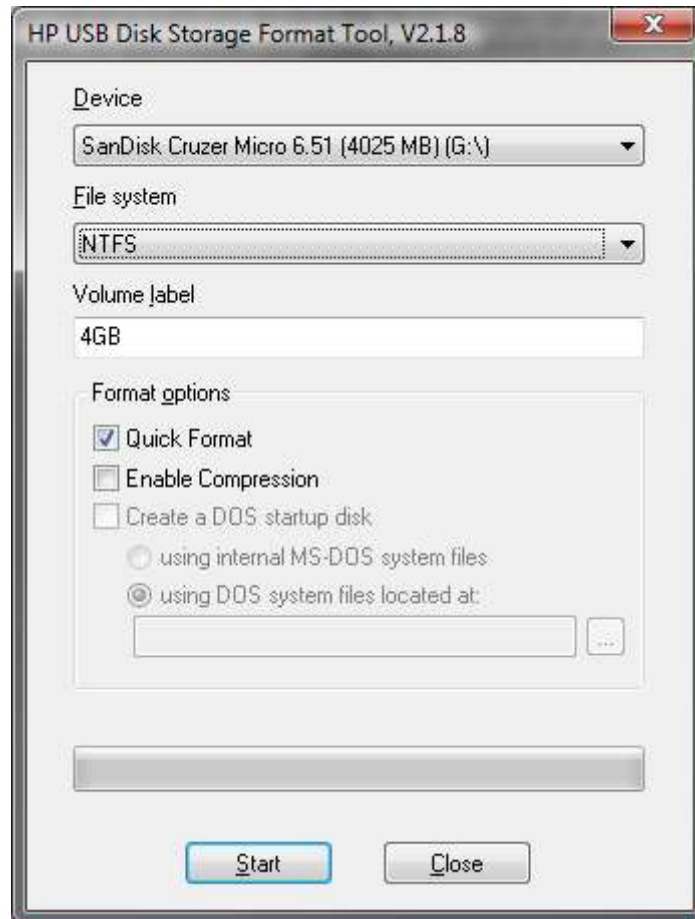
La première est de le formater correctement : la méthode dépend du type de lecteur utilisé. Si c'est une clé USB, le mieux est d'utiliser l'outil HP USB Disk Storage Format. Pour un disque dur externe, on peut le formater en utilisant "Gestion des disques" dans la console MMC de la Gestion de l'ordinateur.

<note important>Évidemment, le formatage détruira toutes les données actuellement stockées sur le disque ; si on veut les conserver, sauvegarder d'abord ces données quelque part avant de commencer.</note>

Formatage

Formater une clé USB

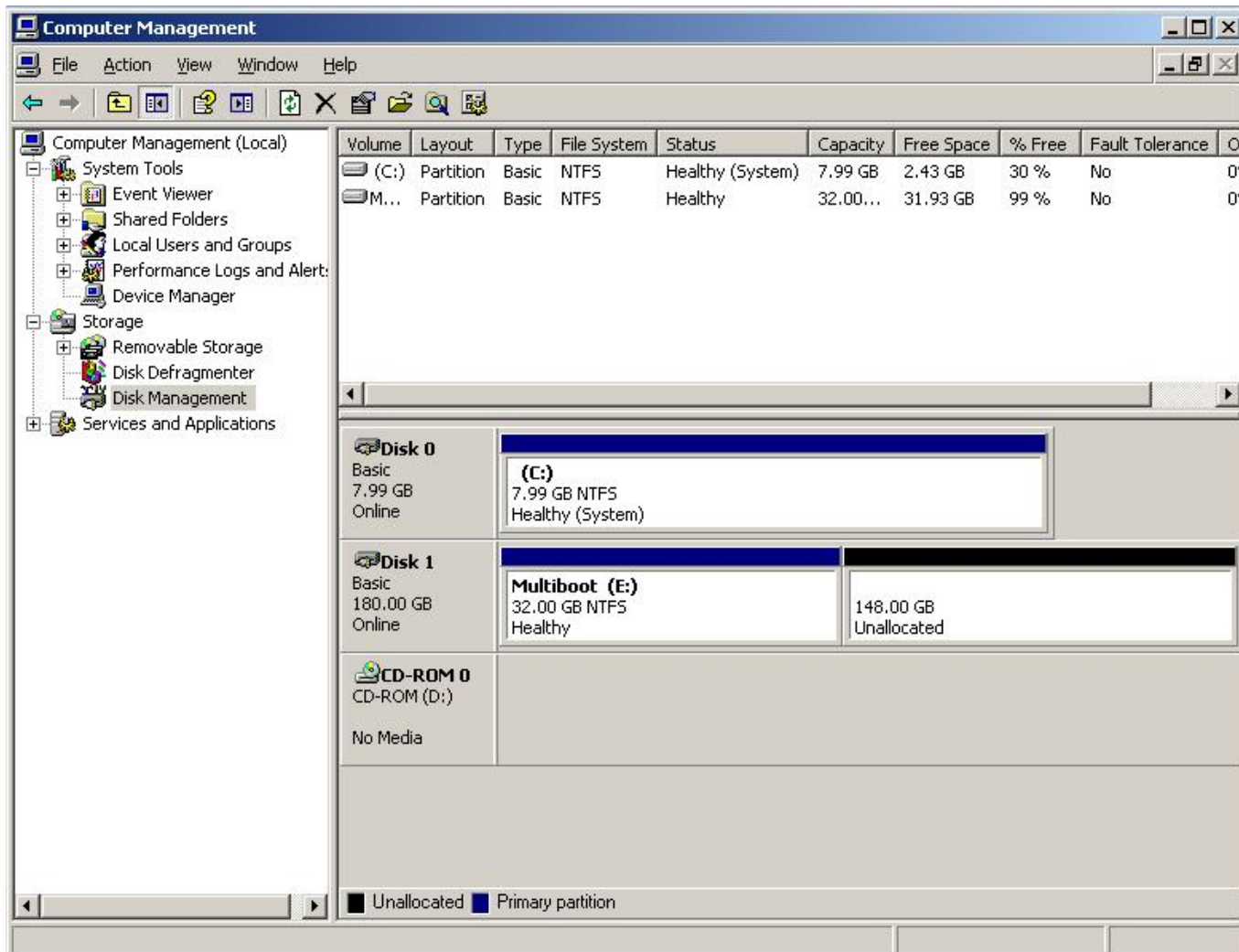
Brancher la clé USB puis lancer l'outil HP USB Disk Storage Format. Il apparaît une liste de tous les disques amovibles de l'ordinateur. Si aucun autre lecteur USB ou lecteur de carte n'est connecté, la clé USB est seule visible et déjà sélectionnée ; Sinon, la sélectionner. Dans "système de fichiers", choisir NTFS. Changer le nom de volume en Multiboot ou quelque chose de semblable, pour faciliter l'identification plus tard. Enfin, cocher l'option "Formatage rapide". L'affichage devrait ressembler à ceci:



Un clic sur Démarrer pour accepter ces paramètres, puis sur Oui pour confirmer. Après quelques instants, le formatage se termine et il s'affiche diverses informations (numéro de série de volume, octets disponibles, etc.) Un clic OK, puis fermer l'outil HP USB Disk Storage Format.

Formater un disque dur USB

Connecter le disque dur USB et lancer la MMC gestion de disques, soit en ouvrant Panneau de contrôle / Performance et maintenance / Outils d'administration / Gestion de l'ordinateur, ou en lançant "diskmgmt" en ligne de commande. Une liste de tous les disques de l'ordinateur, y compris fixes, apparaît. Localiser le disque dur USB voulu et y supprimer la ou les partition(s) existante(s) par un clic droit, en sélectionnant "Delete Volume". Bien qu'on puisse utiliser tout le disque comme une grande partition unique, cela mélange les fichiers personnels et ceux du multiboot - il peut rapidement être gênant de ne pas pouvoir faire le tri. Il vaut donc mieux utiliser au moins deux partitions. Une fois supprimées toutes les partitions existantes, un clic droit sur l'espace vide et sélectionner Nouveau volume (Remarque : sous Windows XP, on voit une nouvelle partition au lieu d'un nouveau volume). type de partition : sélectionner partition primaire, puis cliquer sur Suivant. Entrer un espace en Mo est assez grand pour l'usage prévu (un bon choix peut être 32 Go pour le multiboot et le reste pour les données → saisir 32768 comme taille de la partition, mais c'est un exemple), puis cliquer sur Suivant. Attribuer une lettre de lecteur disponible, puis cliquer sur Suivant. Choisir comment formater la partition, sélectionner NTFS comme système de fichiers, laisser la taille d'unité d'allocation par défaut, puis entrer un nom de volume au choix (Multiboot par ex.). Sélectionner formatage rapide puis cliquer sur Suivant, et sur Terminer. Windows crée la partition et la formate. Cela fait, on doit avoir quelque chose comme ceci :



Rendre la partition active

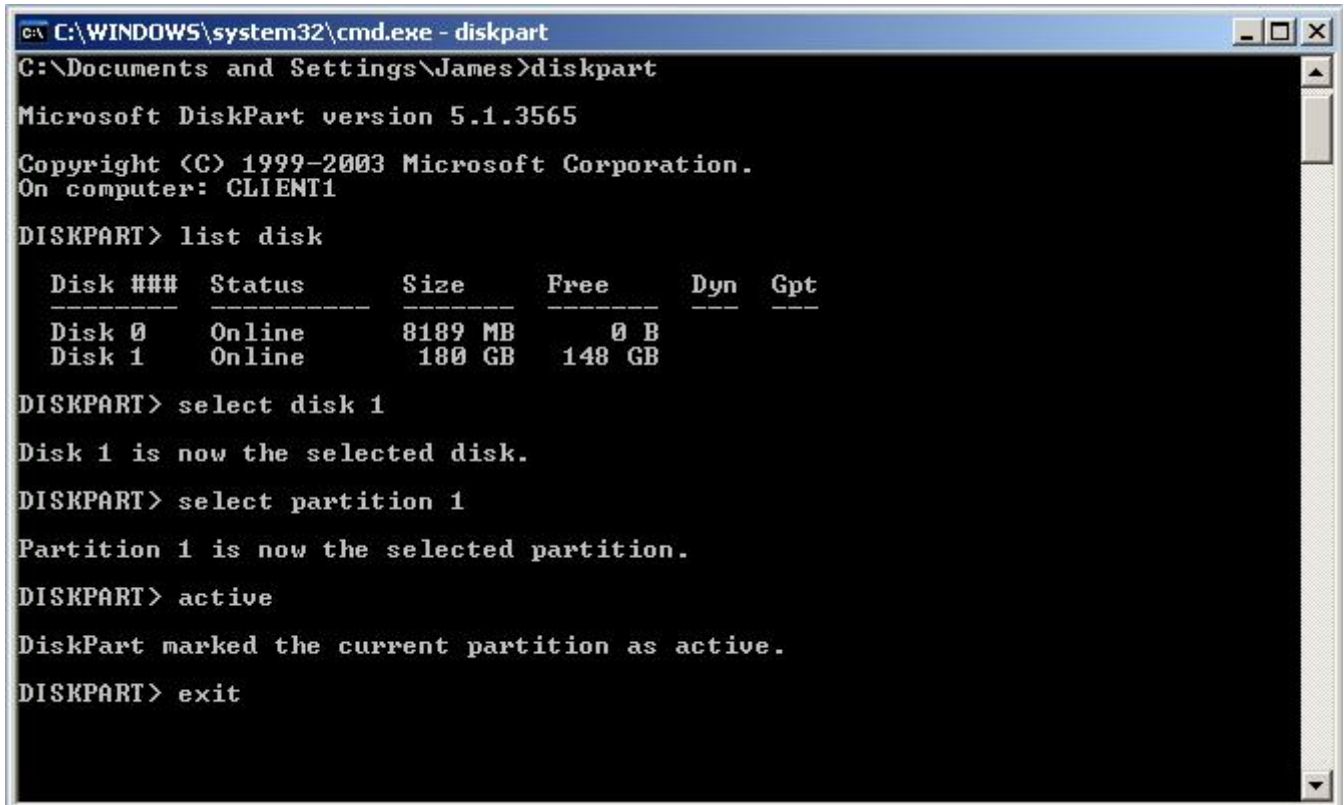
Il faut maintenant rendre la nouvelle partition active. On utilise pour cela l'outil en ligne de commande DiskPart. A l'invite de commande (soit par le menu Démarrer → Tous les programmes → Accessoires, soit en tapant CMD dans la boîte de dialogue exécuter), taper diskpart et Retour. Il faut maintenant identifier le numéro du disque attribué à la clé USB : taper

```
list disk
```

pour afficher une liste de tous les lecteurs de l'ordinateur. Dans cet exemple, le lecteur USB est le disque 1. Sélectionner le disque en tapant select disk # où # est le numéro du disque. Sélectionnez la partition # et la marquer comme active en entrant :

```
select partition #  
active
```

DiskPart confirme le succès de l'opération, comme ci-dessous :



```
C:\WINDOWS\system32\cmd.exe - diskpart
C:\Documents and Settings\James>diskpart

Microsoft DiskPart version 5.1.3565
Copyright (C) 1999-2003 Microsoft Corporation.
On computer: CLIENT1

DISKPART> list disk

   Disk ###  Status         Size           Free           Dyn  Gpt
   -----  -
   Disk 0    Online         8189 MB         0 B
   Disk 1    Online        180 GB         148 GB

DISKPART> select disk 1
Disk 1 is now the selected disk.

DISKPART> select partition 1
Partition 1 is now the selected partition.

DISKPART> active
DiskPart marked the current partition as active.

DISKPART> exit
```

La partition est maintenant marquée comme active. On peut quitter DiskPart ou fermer l'invite de commande.

La clé USB est maintenant bien préparée et amorçable.

Préparer les images d'installation de Windows Vista/2008

Éléments essentiels et logiciels pour cette partie :

- [Windows Automated Installation Kit](#) (WAIK)
- les médias d'installation de Windows Vista, Server 2008, Windows 7 (pour les éditions que l'on veut installer)
- [GImageX](#) - GUI pour ImageX, pas indispensable mais fortement recommandé

Un merci spécial à chon_ du forum msfn.org pour ses [instructions](#) dont est tirée cette partie du guide.

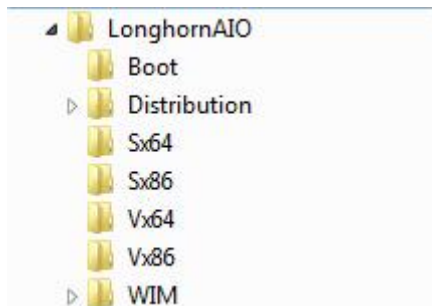
Maintenant que la clé USB est prête à l'emploi, il est temps de préparer la source d'installation de Windows. On utilise l'outil ImageX (qui fait partie du Windows Automated Installation Kit ou kit WAIK). ImageX peut exporter des images individuelles depuis le fichier install.wim du média standard de Windows Vista ou Server 2008. Si on ne veut rien changer dans install.wim, il suffit d'extraire le média d'installation dans un dossier sur le disque dur et de passer à l'étape suivante.

Extraire les images de chaque média d'installation

Tout d'abord, décider quelles images incorporer dans le média multi-installation. Retenir que plus on inclut d'images, plus la source sera grosse. Pour mémoire, chaque édition de Longhorn (c.a.d. Server 2008 et Vista) fait 5,5 Go ; si on veut inclure Windows 7, cela va jusqu'à 8,5 Go - trop gros pour un

DVD double couche mais utile si on a un lecteur de 16Go. Dans cet exemple, on va utiliser Windows Vista Ultimate x86 et x64 et Server 2008 Enterprise x86 et x64 - sans doute les versions les plus couramment utilisées.

Créer un dossier de travail avec une structure comme :



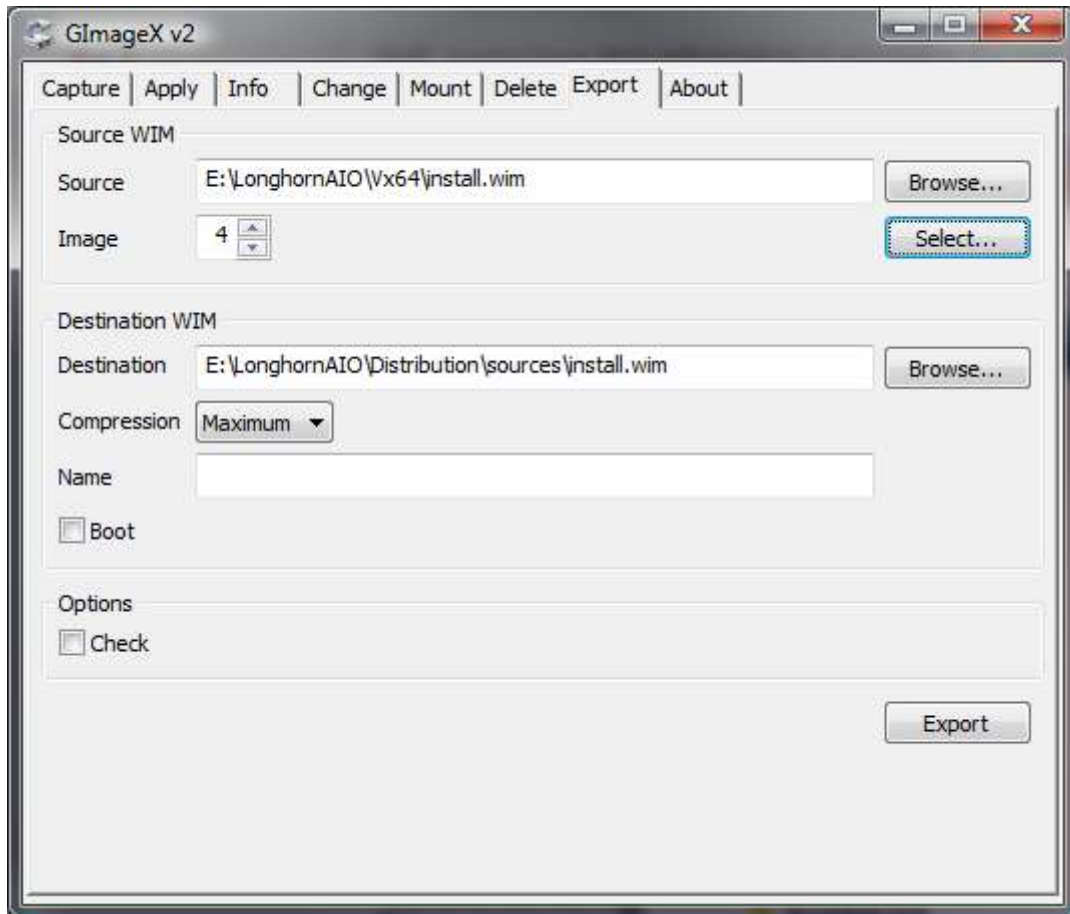
Extraire le contenu du disque Windows Vista x86 dans le dossier E:\ LonghornAIO\Distribution (Remplacer "E:\ LonghornAIO\" par le répertoire qui a été créé). Remarque : on peut aussi utiliser le disque x86 pour serveur 2008 si on ne construit qu'une image Server 2008. Éviter les versions x64 car elles ne fonctionnent pas sur les machines qui ne supportent pas x64 ; par contre, toute machine avec un processeur x64 sera capable d'utiliser la version x86.

Déplacer E:\LonghornAIO\Distribution\Sources\install.wim → E:\LonghornAIO\Vx86

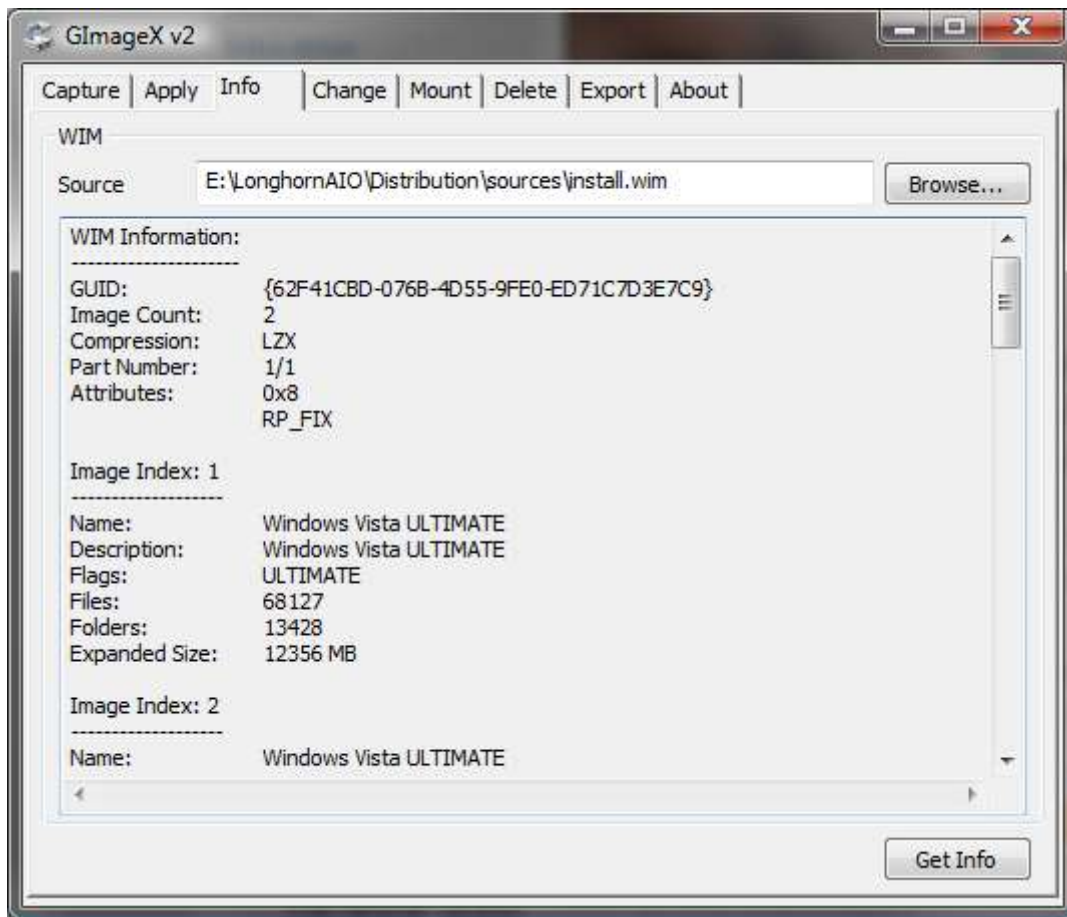
Extraire les fichiers install.wim de chaque disque d'installation à intégrer dans la source. Par exemple, extraire install.wim du disque Server 2008 x86 en Sx86.

Exporter les sources d'installation dans un install.wim maître

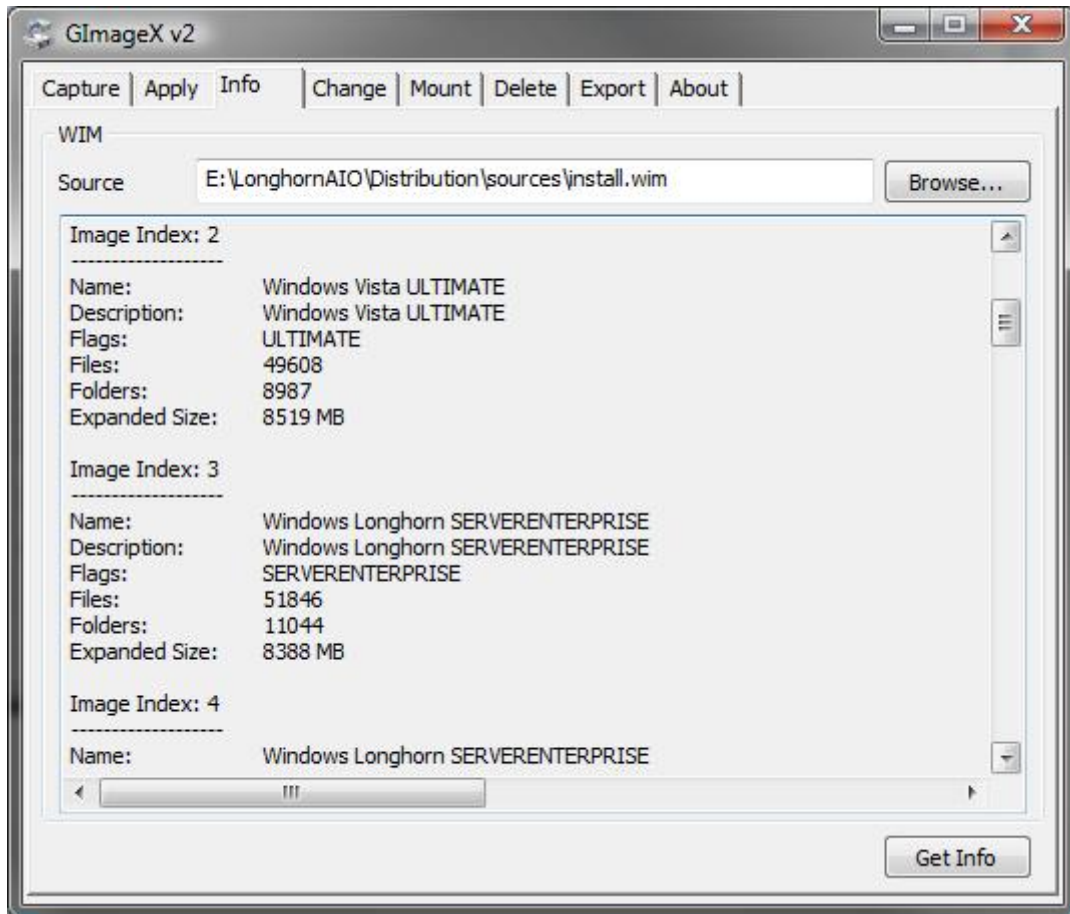
Il est temps de fusionner les images dans l'install.wim. Ouvrir GImageX et sélectionner l'onglet Export. Cliquer sur le bouton **Parcourir** du haut et sélectionner E:\LonghornAIO\Vx64\Install.wim. Cliquer sur le bouton **Parcourir** du bas et sélectionner E:\LonghornAIO\Distribution\sources\Install.wim. Cliquer sur le bouton **Select** et choisir l'image "4 - Windows Vista ULTIMATE". Changer la compression → maximale. Une fois fini, on voit quelque chose comme ceci :



Un clic sur Exporter pour lancer l'extraction de l'image vers le nouveau fichier Install.wim. Cela prend quelques minutes, selon la vitesse du processeur et du disque dur. Quand c'est terminé, fermer la fenêtre et changer la source de WIM en E:\LonghornAIO\Vx86\Install.wim et sélectionner l'image 4 - Windows Vista Ultimate, puis cliquer à nouveau sur Exporter. Le processus devrait être beaucoup plus rapide cette fois car la plupart des fichiers dans l'image sont les mêmes que dans la première extraction. Une fois le processus terminé pour la deuxième fois, on peut vérifier que les deux images sont là en cliquant sur l'onglet Info et en sélectionnant E:\LonghornAIO\Distribution\sources\Install.wim ; on voit quelque chose comme :

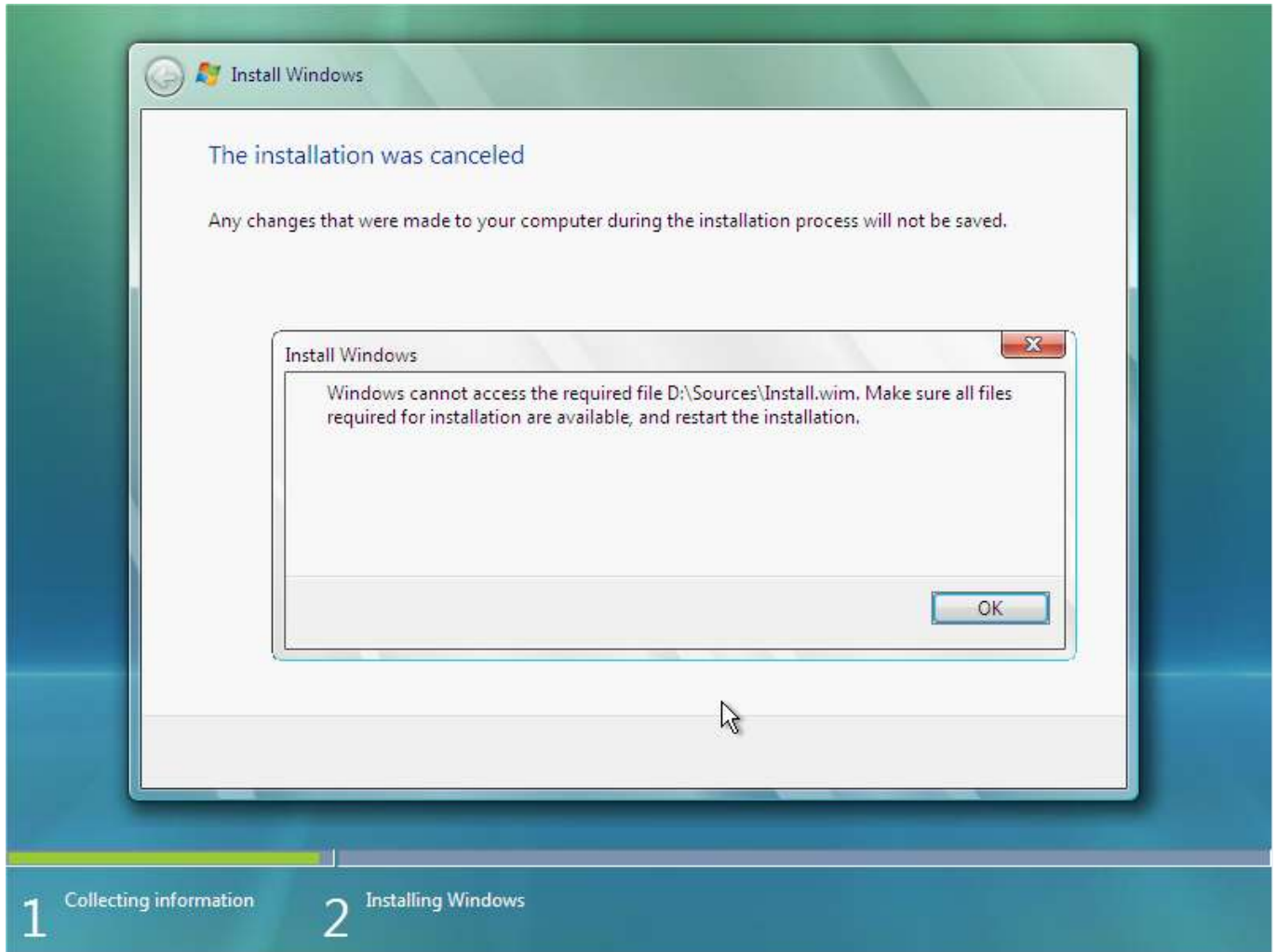


Répétez ce processus, en sélectionnant cette fois E:\LonghornAIO\Sx64\install.wim comme la source WIM, en sélectionnant l'image 2 - Windows Longhorn SERVERENTERPRISE, et exporter l'image. Répétez cela une dernière fois en sélectionnant E:\LonghornAIO\Sx86\install.wim comme source WIM, en sélectionnant l'image 2 - Windows Longhorn SERVERENTERPRISE, et exporter l'image. Une fois terminé, l'onglet Infos devrait ressembler à ceci :

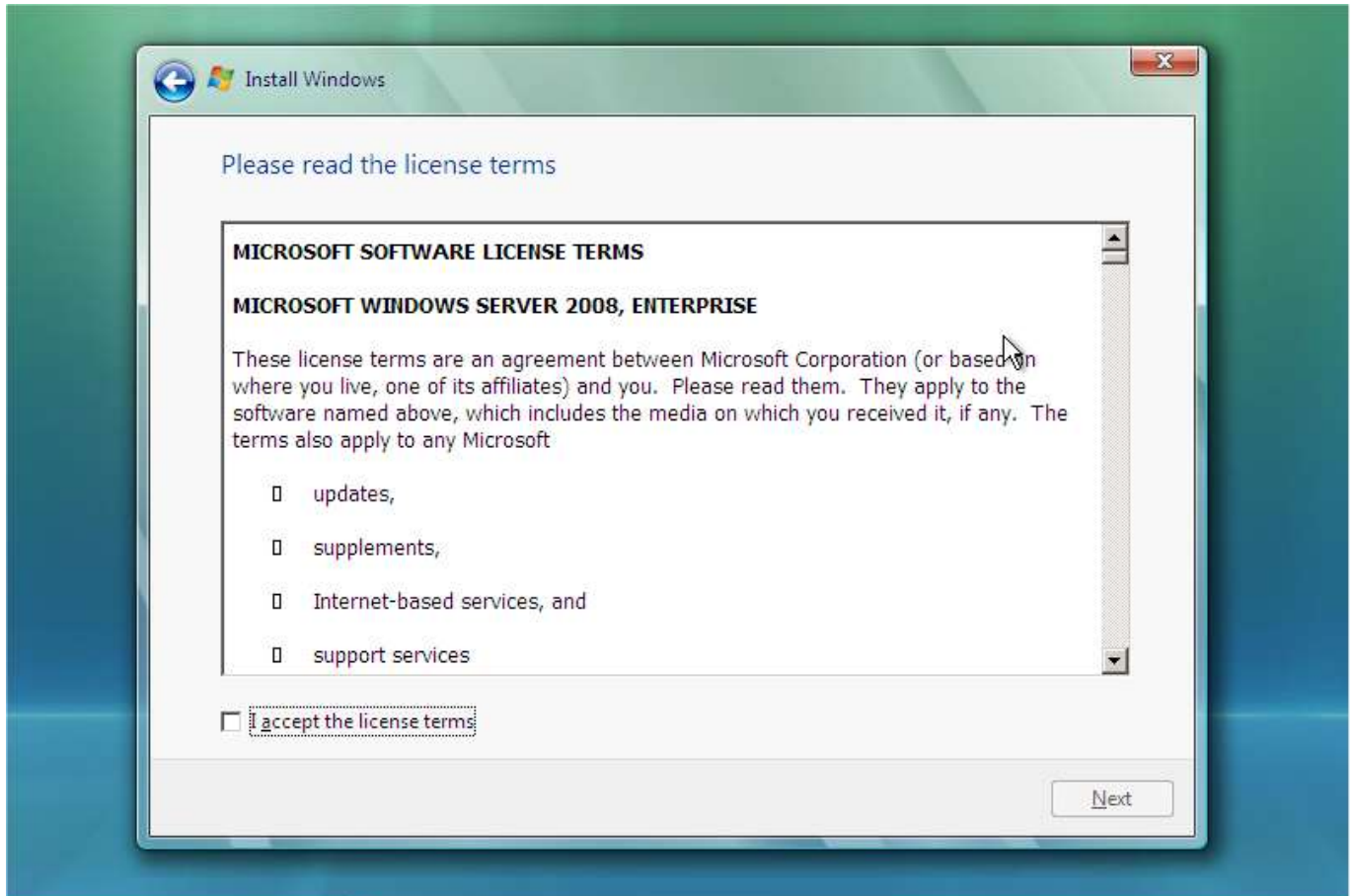


On peut répéter ce processus autant de fois qu'on veut, en incorporant autant d'images que voulu, mais attention à ne pas accidentellement exporter deux fois la même image. Si c'est le cas, on peut utiliser l'onglet Delete pour effacer l'image surnuméraire de install.wim.

Maintenant que install.wim contient toutes les images que l'on veut, il faut fusionner les contrats de licence de Vista et Server 2008. Si on ne le fait pas, on reçoit ce message d'erreur quand on essaye de sélectionner une image pour laquelle le contrat de licence n'existe pas (par exemple: si on a utilisé le disque de Vista x86 comme la base et qu'on essaye d'installer Server 2008 Enterprise Edition sans copier le contrat de licence à partir du disque serveur 2008) :



Extraire le dossier sources\license du disque Server 2008 →
E:\LonghornAIO\Distribution\sources\license, en écrasant les fichiers en double. Maintenant, quand on sélectionne l'image, on voit le contrat de licence au lieu du message d'erreur :



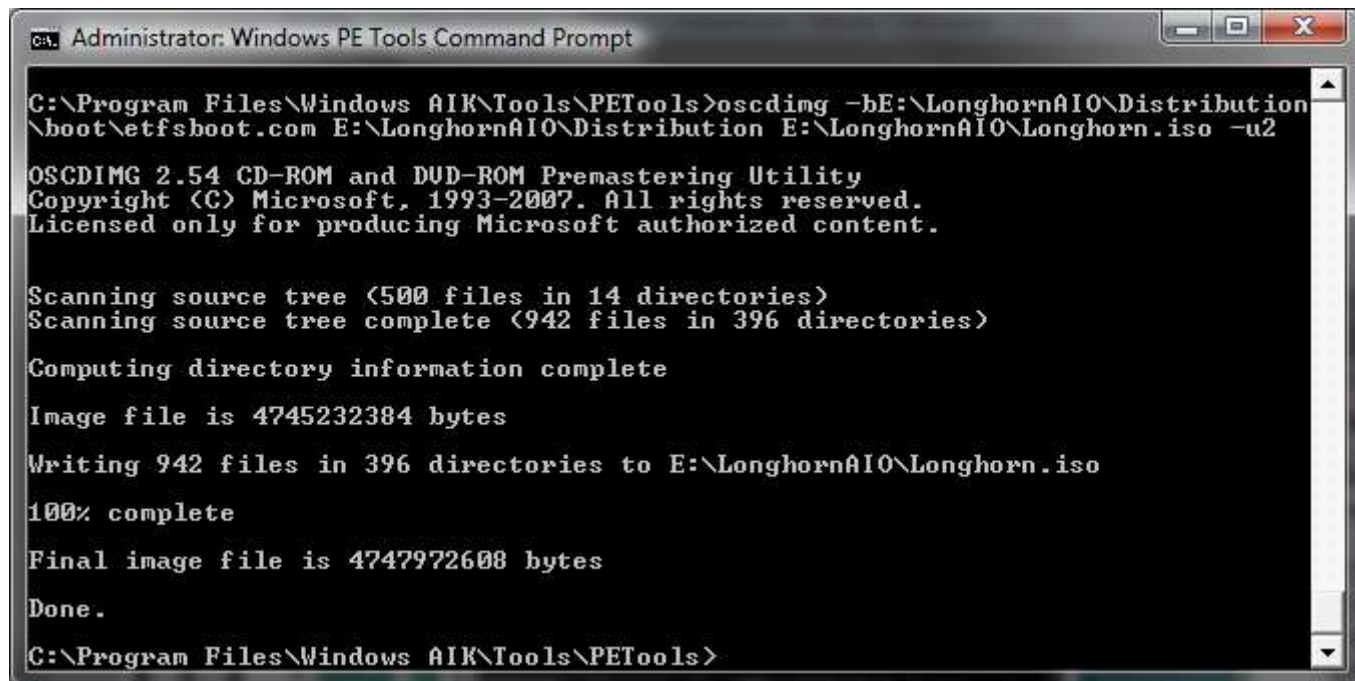
On voit que cela fonctionne maintenant, le contrat de licence Server 2008 Enterprise s'affiche correctement dans l'installation de Windows Vista.

Créer un ISO bootable avec la nouvelle source pour les tests

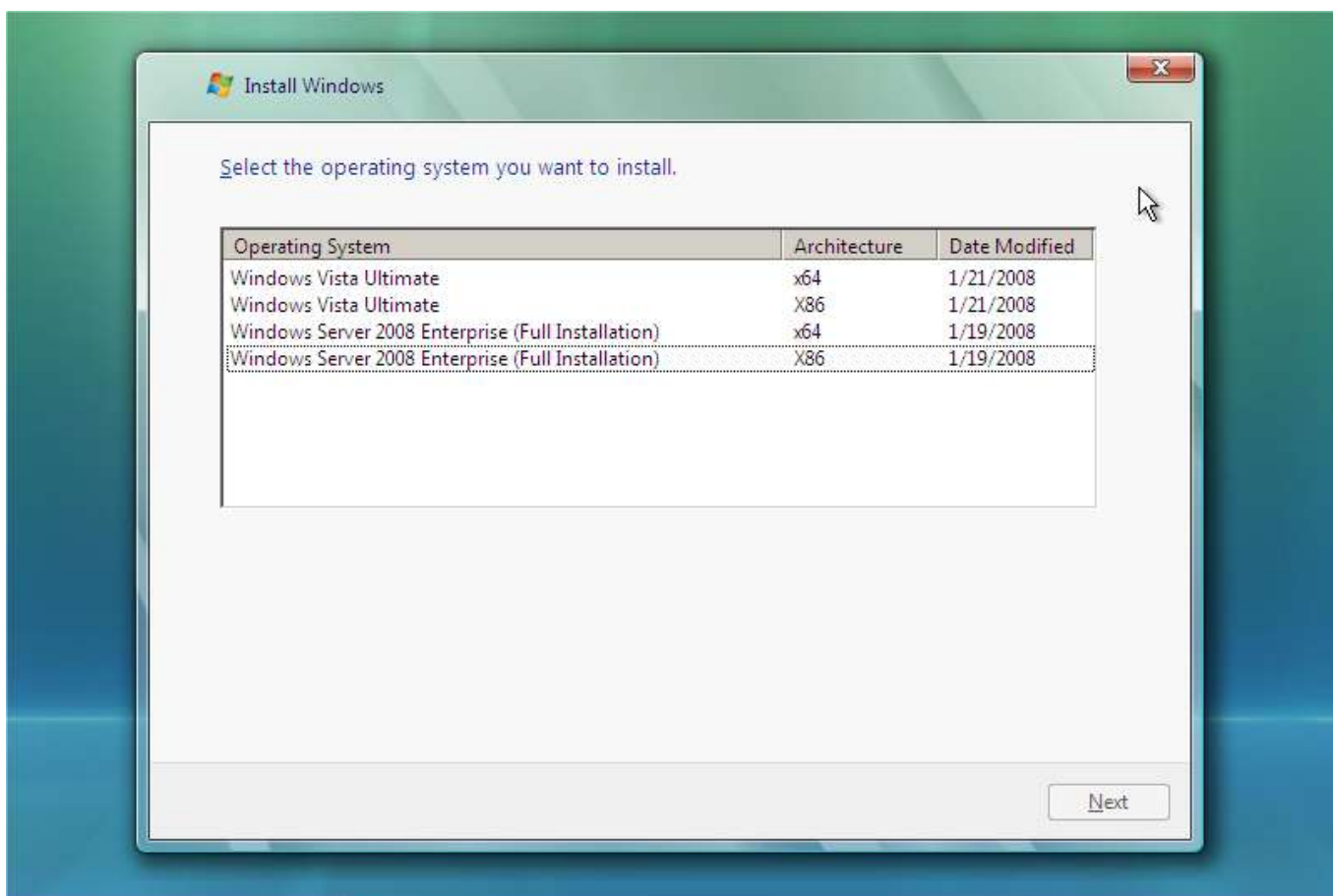
Voilà, on a maintenant les sources d'installation fusionnées pour Windows Vista x86 et x64 ultime, et Server 2008 Enterprise x86 et x64. Si on veut tester que cela fonctionne correctement avant de passer à l'étape suivante, on peut créer une image ISO du support d'installation à l'aide du WAIK. Exécuter le Windows PE Tools Command Prompt en tant qu'administrateur, et utiliser OSCDimg.exe pour créer l'ISO avec la commande suivante :

```
oscdimg -bE:\LonghornAI0\Distribution\boot\etfsboot.com  
E:\LonghornAI0\Distribution E:\LonghornAI0\Longhorn.iso -u2
```

Noter qu'il n'y a pas de blanc entre-b et E:\ - c'est la syntaxe correcte pour préciser le secteur d'amorçage. Plus de détails sur les options de oscdimg sur [l'article Technet de Microsoft](#) pour cet outil. Si l'image fait 4 Go, pas besoin d'utiliser le système de fichiers UDF, on peut remplacer -u2 par -n.



Après quelques minutes oscdimg termine la création du fichier ISO et on peut maintenant le tester, soit en le gravant sur un DVD, soit en utilisant un logiciel de virtualisation. Si tout s'est déroulé comme prévu, on doit voir quatre images disponibles pour l'installation :



On peut à tout moment revenir et exporter des images supplémentaires dans install.wim. For example, I extracted Windows 7 Ultimate x64 & x86 and Server 2008 R2 Enterprise and merged in the license agreements; - for some reason the Windows 7 and Server 2008 R2 images won't install

properly if you merge them into an install.wim that contains Vista or Server 2008. I am investigating this to see if there is a workaround.

Utilisation de WinSetupFromUSB pour créer la clé USB bootable

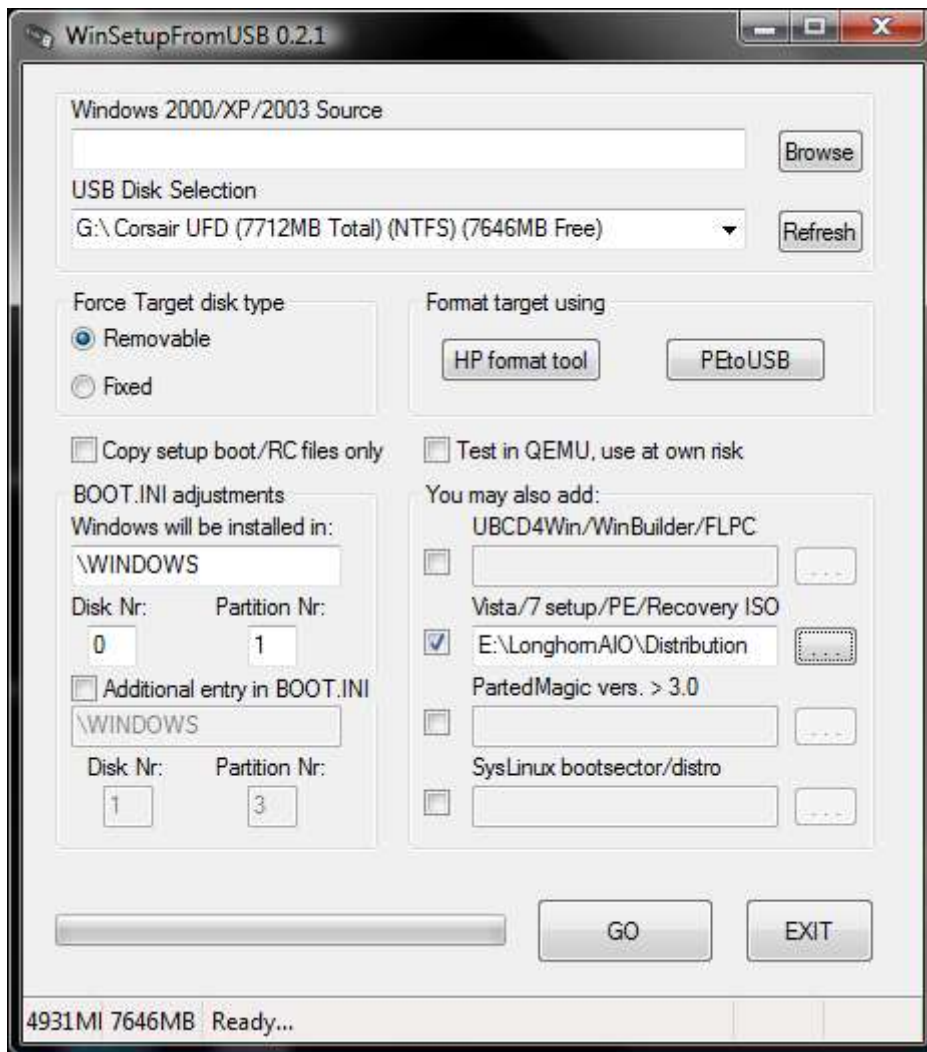
Éléments essentiels et logiciels pour cette partie :

- [WinSetupFromUSB](#) - miroir : [here](#)
- le répertoire de distribution pour Windows Vista/Server 2008/7/2008 R2 de la deuxième partie
- [Grub4DOS](#)
- [Grub4DOS Toolbox](#)

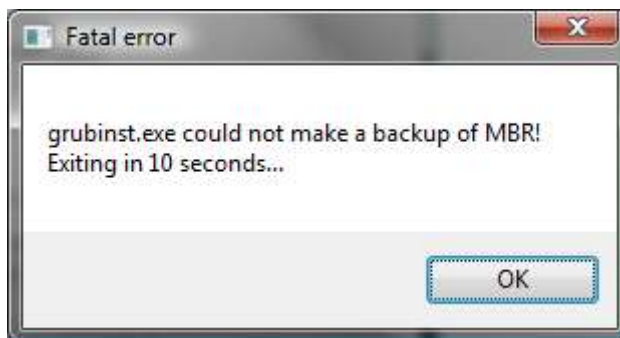
Utilisation de WinSetupFromUSB pour copier l'installation de Windows sur le disque USB et le rendre bootable

Connecter la clé USB et lancer WinSetupFromUSB. Si le lecteur USB est mal préparé, on voit l'erreur "No USB disks detected or not properly formatted" dans le champ de sélection du dosque USB - revenir à la première partie et suivre les instructions. Si on voit le disque USB, cest qu'il a été correctement préparé.

Sélectionner la case à côté de Vista/7 setup/PE/ ISO de récupération, puis entrer E:\LonghornAIO\Distribution (ou le dossier de travail créé dans l'étape précédente) dans la case. On est averti si la source est trop volumineuse pour tenir sur la, dans ce cas, s'assurer que l'Install.wim est assez petit pour tenir sur le disque. WinSetupFromUSB devrait maintenant ressembler à ceci :

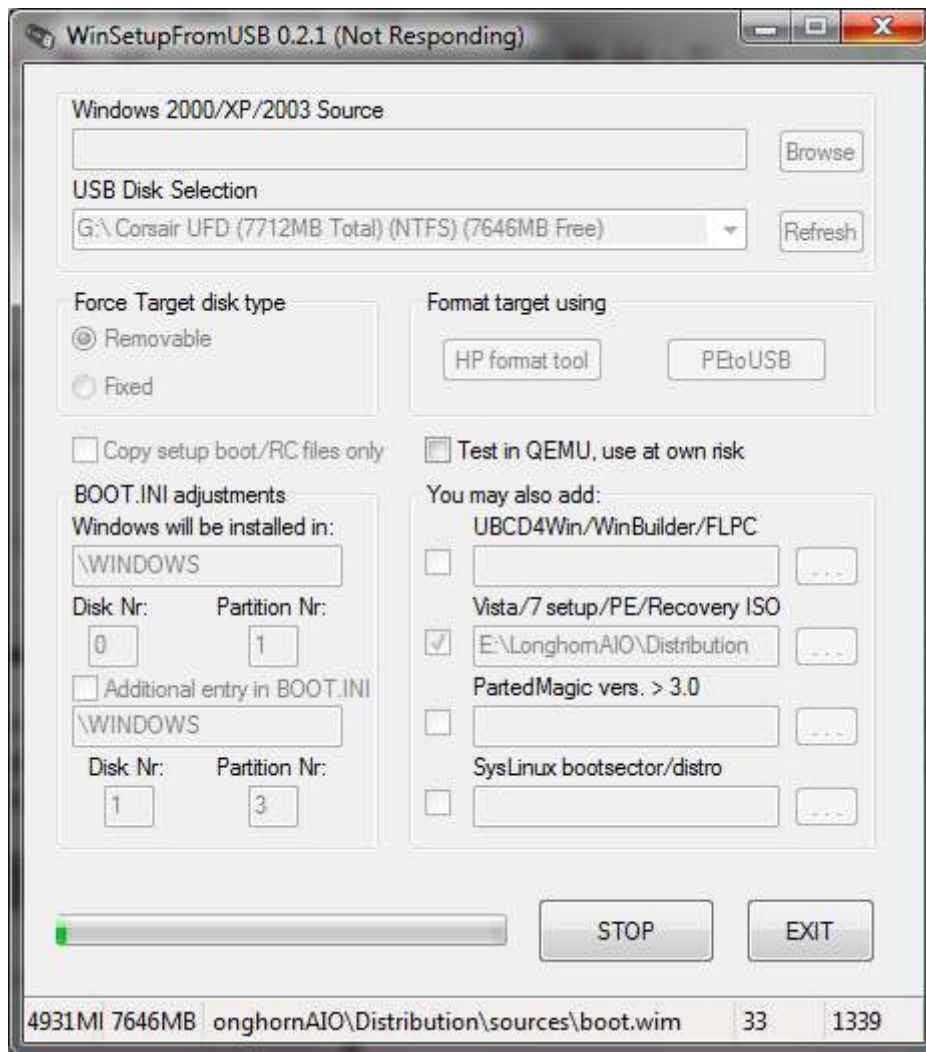


Remarquer le numéro dans le coin en bas à gauche. C'est l'espace total dans le dossier de distribution et celui que les fichiers de support requis prendront sur le disque USB. Cliquer sur GO pour commencer le processus. Si le numéro du disque USB est 10 ou plus, on peut recevoir l'erreur suivante :



Cela veut dire le grubinst.exe qui utilise WinSetupFromUSB ne peut accéder aux 10 premiers lecteurs dans votre ordinateur. Par exemple, avec un lecteur de carte USB avec beaucoup de fentes, chacune étant vue comme un numéro de disque propre. On résout ce problème en le déconnectant.

WinSetupFromUSB va copier tous les fichiers du dossier E:\LonghornAIO\distribution sur le lecteur USB, ce qui peut prendre un certain temps si le lecteur USB est lent. On suit la progression en bas de la fenêtre :



WinSetupFromUSB peut sembler planter quand il copie les fichiers WIM - pas de panique, il va répondre une fois le transfert de fichier terminé.

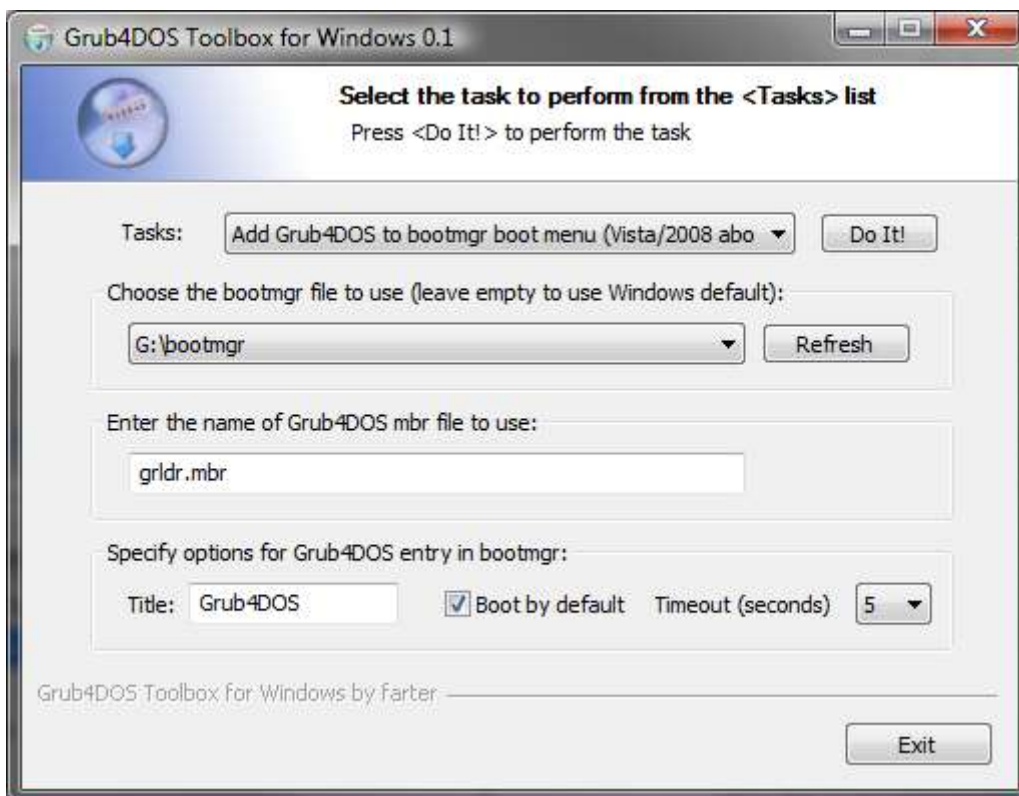
Après quelques minutes (ou plus si le lecteur USB est lent et install.wim grand), WinSetupFromUSB annonce que le processus est terminé. On a maintenant une clé USB bootable à partir de laquelle on peut installer les versions de Windows que l'on a intégrées dans le install.wim. Si c'est tout ce qu'on veut, pas besoin d'aller plus loin. Pour ajouter Windows XP/2003 ou des utilitaires, lire la suite. C'est maintenant le un bon moment pour vérifier que la clé USB fonctionne comme prévu. L'insérer dans un ordinateur qui supporte le démarrage USB et la sélectionner comme périphérique de démarrage. On devrait voir "Windows chargement des fichiers ..." ...

Installation de Grub4DOS sur le disque USB

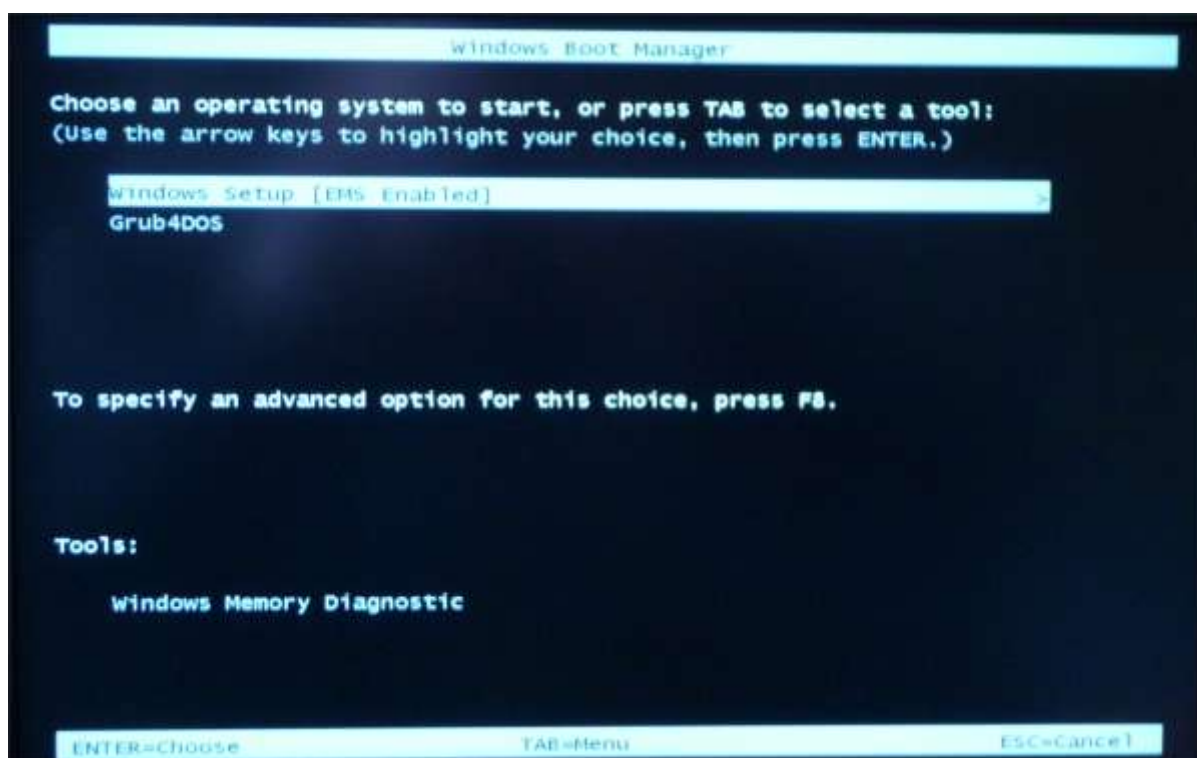
Pour pouvoir sélectionner différentes options de démarrage, nous devons installer un chargeur de démarrage, et grub4dos est l'un des plus populaires. Télécharger grub4dos et la boîte à outils grub4dos, et les extraire dans un répertoire sur le disque dur, E:\Tools par exemple. S'assurer de les avoir mis dans le même répertoire, sinon la boîte à outils grub4dos sera incapable de trouver grub4dos.

Connecter la clé USB et lancer la boîte à outils grub4dos. Dans le menu Tâches, sélectionner Ajouter au menu de démarrage grub4dos bootmgr (Vista/2008 en haut), puis sélectionner le fichier bootmgr sur la clé USB - si on utilise Vista/2k8/7, on voit aussi l'option C:\bootmgr, cependant, s'assurer de ne

pas la sélectionner. Laisser le nom du fichier mbr Grub4DOS mbr et title entry par défaut, et sélectionner l'option de démarrage par défaut. On peut sélectionner le délai que l'on veut (par exemple 5 secondes). Une fois ces options définies, on voit quelque chose comme ceci :



Un clic sur Do It! pour commencer le processus. Grub4dos Toolbox affiche le succès de l'opération. Un clic sur Exit pour fermer la fenêtre Grub4DOS Toolbox. Maintenant ouvrir le répertoire dans lequel on a grub4dos et copier gldr.mbr à la racine du votre disque USB. Quand on démarre à partir du lecteur USB, on devrait voir le menu suivant :



Si on sélectionne Windows setup, l'installation de Windows se lance, et on peut installer les images Windows Vista/2k8/7 comme plus haut, Cependant, si on sélectionne grub4dos, on voit le menu par défaut de grub4dos.

Ajout d'options de démarrage et modification du menu grub4dos

Éléments essentiels et logiciels pour cette partie :

- Un Éditeur de texte [Notepad++](#)
- des images CD 3rd party - WinPE/[BartPE](#), [UBCD](#), [GParted](#) etc.

Modification du menu grub4dos

Localiser menu.lst à la racine de la clé USB et l'ouvrir dans l'éditeur de texte. On voit le menu par défaut de grub4dos, qui a beaucoup d'options qui sont commentées - ne pas hésiter pas à supprimer ce qui est précédé d'un # car nous allons ajouter nos propres entrées. Par exemple, ajoutons l'image de Ultimate Boot CD image et ajoutons-la au menu. Copier le fichier ISO de UBCD à la racine de la clé USB et ajouter les lignes suivantes au fichier menu.lst :

```
title Ultimate Boot CD 4.11 ISO\nLance UBDC
find --set-root /ubcd411.iso
map /ubcd411.iso (0xff) || map --mem /ubcd411.iso (0xff)
map --hook
chainloader (0xff)
savedefault --wait=2
```

S'assurer que le nom du fichier correspond à celui mentionné dans le fichier menu.lst - ubcd411.iso dans cet exemple. Sauvegarder et fermer le fichier menu.lst et démarrer à partir de la clé USB ; on voit une nouvelle option dans le menu de grub4dos. On peut ajouter autant d'images que l'on veut, la seule limite est la taille du disque USB.

Malheureusement, il ne suffit pas toujours de simplement copier le fichier ISO sur le lecteur et le référencer dans le menu.lst - EDes choses comme WinPE ou BartPE ne bootent pas de cette façon, à moins de les charger d'abord en RAM (un guide extrêmement utile sur la façon de faire peut être [trouvé ici](#)). Certains LiveCD Linux échouent également en utilisant cette méthode, mais peuvent être lancés par leur bootloader. Divers guides sur Internet expliquent comment faire. Si une image ne fonctionne pas, lire le manuel grub4dos, disponible sur le site du projet, qui fournit un grand nombre d'informations utiles pour charger ces images de CD gênantes.

Bien que je ne puisse pas énumérer tout ce qu'on peut vouloir démarrer à partir d'une clé USB, voici quelques indications pour en lancer certains à partir de grub4dos sans problème :

Utility	entrée de menu Grub4DOS
Acronis True Image	<pre>title Acronis True Image Server 8.0 ISO\nLoad the old version of Acronis True Image Server find -set-root /Acronis.iso map /Acronis.iso (0xff) map -mem /Acronis.iso (0xff) map -hook chainloader (0xff)</pre>

Utility	entrée de menu Grub4DOS
FreeDOS	title FreeDOS\nLaunch the FreeDOS operating system map -mem (hd0,0)/DOSUBCD.IGZ (fd0) map -hook chainloader (fd0)+1 rootnoverify (fd0)
MemTest86+	title MemTest86+\nStart MemTest86+ kernel /memtest.bin
Ultimate Boot CD 2.4 ISO	title Ultimate Boot CD 2.4 ISO\nLoad the old version of UBDC find -set-root /ubcd24.iso map /ubcd24.iso (0xff) map -mem /ubcd24.iso (0xff) map -hook chainloader (0xff)
WinPE x86	find -set-root /WinPE_x86.iso map /WinPE_x86.iso (0xff) map -mem /WinPE_x86.iso (0xff) map -hook chainloader (0xff)

Créer un DVD multi-boot

trouvé sur http://ahmedthemodder.blogspot.com/2009/06/creating-multi-boot-dvd_24.html

Introduction

Quiconque travaille dans un environnement multi-OS ou en IT sait qu'il est pénible de transporter de multiples cds et disquettes contenant les systèmes d'exploitation et les logiciels de diagnostic et de support. Ce guide essaie de simplifier ces problèmes. Je vais montrer qu'il est facile de créer son propre DVD avec tous les systèmes d'exploitation Windows que l'on veut et comment y ajouter les outils de diagnostic et de support. Un seul disque avec tous les systèmes d'exploitation et outils de support dont on rêve !

Getting Started

Pré-requis : * du temps et de la patience. N'espérez pas y arriver du premier coup. * Les cds des système d'exploitation * assez d'espace disque (5+ GB pour être tranquille) * explorateur de fichiers :

- “Montrer les fichiers et dossiers cachés”
- dé-cocher “Cacher les extensions des fichiers dont le type est connu”
- désactiver “Cacher les fichiers système protégée (Recommandé)”
- WinImage 6.10
- Un éditeur hexa (Hex Workshop 4.23)
- CDIMAGE 2.47
- CD Shell 2.0.11
- (Optionnel) - VMware Workstation 4.0.5 ou Virtual PC 2004
- Un logiciel pouvant graver des images burning ISO sur DVD

TIP!: Work on one operating system at a time. Test once you have that operating system added to make sure everything works right, then move onto the next OS. It will save yourself time when something goes wrong and you have no idea where to look.

Preparation Before we get started copying cds and modifying files, we should figure out where we want to store our files. For this entire site, I will be using the D:\ in all of my examples. Keep in mind that my 4.0GB DVD actually takes up 7.8 GB of hard drive space before CDIMAGE optimizes files, so make sure you have plenty of room on your target drive.

1. In your C:\ (or the root of your OS drive) you should find a file called boot.ini. Make a copy of this file and store it somewhere, we will need it later!
2. Create a directory on your target drive called AIO-DVD.
3. Make a folder inside of AIO-DVD called SETUP that will store all of the cds.
4. If you haven't already downloaded CD Shell from the link above, please do so. Extract the zip file and move the BOOT folder for CD Shell and all of it's contents into AIO-DVD.
5. Place the tools folder from the CD Shell zip file into the BOOT folder. Your directory structure should look something like this so far: D:\AIO-DVD\D:\AIO-DVD\SETUP\D:\AIO-DVD\BOOT\D:\AIO-DVD\BOOT\tools\

NOTE: My guide does not use Gosh's Reducing Size of Source method to trim down installs, nor will this guide cover that method. Using the full cd allows you to call the setup.exe file for each OS in case you want to check for hardware compatibility or install from within the Windows GUI. This will also allow you to install upgrades if you so choose. <http://flyakite.msfhosting.com/gettingstarted.htm> (1 of 2) 3/28/2004 5:40:58 PM

Getting Started **NOTE 2:** All images used throughout this guide are used for demonstration purposes only. For example: If the image shows PRO1 on it somewhere yet you are working on a Windows 2000 Pro cd, just modify the file according to the guide, not necessarily the image.

Understanding The Boot Process Okay, before we go on it helps to understand the boot process for NT based operating systems. When a bootable XP cd is created, a file called xpboot.bin is used to create the boot sector. It is possible to extract the boot sectors from your cd, but it's a pain so I will be providing them for you. This boot sector says to access the i386 folder and load setupldr.bin. setupldr.bin has instructions on where to access txtsetup.sif which starts the text-mode setup for Windows. Are you ready yet? Here we go... <http://flyakite.msfhosting.com/gettingstarted.htm> (2 of 2) 3/28/2004 5:40:58 PM

Windows XP Pro SP1

Well, I think we're ready to start copying our first cd. If you haven't read Getting Started please do so before proceeding. Copying the CD Contents Inside of your SETUP folder which should be in AIO-DVD create a folder called XP and then create another folder inside of it called Professional. eg. - D:\AIO-DVD\SETUP\XP\Professional\ Copy the entire XP Professional cd to the Professional folder.

Creating the Boot Folder Thanks to gosh from the MSFN forums, I have discovered a much better way to obtain the boot files. While this method is a slight pain, it ensures that everyone has the proper boot files for their DVD. Go to Start → Run and type or paste the following command with the correct drive letter of course: D:\AIO-DVD\SETUP\XP\Professional\i386\winnt32.exe /noreboot

Windows XP setup should come up. Choose "New Installation" and go through the options as usual. Do NOT download updated setup files. At the "Setup Options" screen, click on "Advanced Options" and make sure "copy all installation files from the CD" is checked. If it is grayed out don't worry about it. Setup should create 2 folders in the root of your main drive. They will be hidden so make sure "Show hidden files and folders" is enabled.

\$WIN_NT\$.~BT - the boot folder
\$WIN_NT\$.~LS - installation files folder

Rename \$WIN_NT\$.~BT to PRO1 and move the entire folder into the AIO-DVD folder. eg. - D:\AIO-DVD\PRO1\

Now in the PRO1 folder delete the following files: BOOTSECT.DAT migrate.inf winnt.sif

IMPORTANT: Now there's just one last thing we have to do. When we ran setup like we just did, it expects us to be installing a new operating system the next time we reboot, so setup adds an extra boot option in the boot.ini file and changes the default boot choice to it. If you followed the <http://flyakite.msfhosting.com/xpprosp1.htm> (1 of 4) 3/28/2004 5:41:00 PM

Windows XP Pro SP1 instructions in "Getting Started", you should have made a copy of your boot.ini file. Take this copy,

and copy it back over the boot.ini file in the C:\. Don't get rid of your original boot.ini, you will need it again if you plan on using other portions of this guide to add more operating systems. If you don't have a backup of your boot.ini file, you can edit it yourself. This is what it normally looks like if you have XP Pro installed on the first or only partition of your hard drive: [boot loader] timeout=30 default=multi(0)disk(0)rdisk(0)partition(1)\WINDOWS [operating systems] multi(0)disk(0)rdisk(0)partition(1)\WINDOWS="Microsoft Windows XP Professional" /fastdetect Editing "setupldr.bin" Let's start modifying some files. First in your PRO1 directory open up the file setupldr.bin in Hex Workshop. Under Edit → Replace (Ctrl+H) search for Type: "Text String." We want to find i386 and replace it with PRO1, as shown in the screenshot below. <http://flyakite.msfnhosting.com/xpprosp1.htm> (2 of 4)3/28/2004 5:41:00 PM Windows XP Pro SP1 Click OK and then choose Replace All. It should say "4 Occurrences Replaced." If it does not find 4 occurrences, there may be a problem somewhere. When done, save the file and choose not to back it up. Editing "txtsetup.sif" In your PRO1 folder find the file txtsetup.sif and open it in NotePad. Choose Edit → Find (Ctrl+F) and search for SetupSourcePath. You will need to change the default "\" to reflect the directory you copied your XP Pro cd to. In this case it is "\SETUP\XP\Professional\" SetupSourcePath = "\SETUP\XP\Professional\" Creating the Boot Sector Now we will need to create the boot sector file that will actually load the text-mode setup for our operating system. Download the PRO1.zip file. Extract the file and then open PRO1.dat in Hex Workshop. Scroll down until you see the following text in the right hand side. The red text is what we will be replacing. Replace I386 with PRO1. Save the file, choose not to back it up and then place it in the AIO-DVD folder. Finishing Up Navigate to your setup folder \AIO-DVD\SETUP\XP\Professional\ and copy (not move) the following files into the root folder, AIO-DVD. <http://flyakite.msfnhosting.com/xpprosp1.htm> (3 of 4)3/28/2004 5:41:00 PM Windows XP Pro SP1 | readme.html | spnotes.html (only found on an SP1 cd) | win51 | win51ip | win51ip.sp1 (only found on an SP1 cd) <http://flyakite.msfnhosting.com/xpprosp1.htm> (4 of 4)3/28/2004 5:41:00 PM

Windows XP Home SP1

Copying the CD Contents

Inside of your SETUP folder which should be in AIO-DVD create a folder called XP and then create another folder inside of it called Home. eg. - D:\AIO-DVD\SETUP\XP\Home\ Copy the entire XP Home cd to the Home folder.

Creating the Boot Folder

Thanks to gosh from the MSFN forums, I have discovered a much better way to obtain the boot files. Go to Start → Run and type or paste the following command with the correct drive letter of course: D:\AIO-DVD\SETUP\XP\Home\i386\winnt32.exe /noreboot Windows XP Home setup should come up. Choose "New Installation" and go through the options as usual. Do NOT download updated setup files. At the "Setup Options" screen, click on "Advanced Options" and make sure "copy all installation files from the CD" is checked. If it is grayed out don't worry about it. Setup should create 2 folders in the root of your main drive. They will be hidden so make sure "Show hidden files and folders" is enabled. \$WIN_NT\$.~BT - the boot folder \$WIN_NT\$.~LS - installation files folder Rename \$WIN_NT\$.~BT to HOM1 and move the entire folder into the AIO-DVD folder. eg. - D:\AIO-DVD\HOM1\ Now in the HOM1 folder delete the following files: BOOTSECT.DAT migrate.inf winnt.sif IMPORTANT: Now there's just one last thing we have to do. When we ran setup like we just did, it expects us to be installing a new

operating system the next time we reboot, so setup adds an extra boot option in the boot.ini file and changes the default boot choice to it. If you followed the instructions in "Getting Started", you should have made a copy of your boot.ini file. Take this copy, and copy it back over the boot.ini file in the C:\. Don't get rid of your original boot.ini, you will need it again if you plan on using other portions of this guide to add more operating systems. <http://flyakite.msfnhosting.com/xphomesp1.htm> (1 of 4)3/28/2004 5:41:02 PM Windows XP Home SP1 If you don't have a backup of your boot.ini file, you can edit it yourself. This is what it normally looks like if you have XP Home installed on the first or only partition of your hard drive: [boot loader] timeout=30
default=multi(0)disk(0)rdisk(0)partition(1)\WINDOWS [operating systems]
multi(0)disk(0)rdisk(0)partition(1)\WINDOWS="Microsoft Windows XP Home" /fastdetect

Editing "setupldr.bin"

Let's start modifying some files. First in your HOM1 directory open up the file setupldr.bin in Hex Workshop. Under Edit → Replace (Ctrl+H) search for Type: "Text String." We want to find i386 and replace it with HOM1. The screenshot below is just for reference. Click OK and then choose Replace All. It should say "4 Occurrences Replaced." If it does not find 4 occurrences, there may be a problem somewhere. When done, save the file and choose not to back it up.

<http://flyakite.msfnhosting.com/xphomesp1.htm> (2 of 4)3/28/2004 5:41:02 PM Windows XP Home SP1

Editing "txtsetup.sif"

In your HOM1 folder find the file txtsetup.sif and open it in NotePad. Choose Edit → Find (Ctrl+F) and search for SetupSourcePath. You will need to change the default "\" to reflect the directory you copied your XP Home cd to. In this case it is "\\SETUP\XP\Home\" SetupSourcePath = "\\SETUP\XP\Home\"

Creating the Boot Sector

Now we will need to create the boot sector file that will actually load the text-mode setup for our operating system. Download the HOM1.zip file. Extract the file and then open HOM1.dat in Hex Workshop. Scroll down until you see the following text in the right hand side. The red text is what we will be replacing. Replace I386 with HOM1. Save the file, choose not to back it up and then place it in the AIO-DVD folder.

Finishing Up

Navigate to your setup folder \\AIO-DVD\SETUP\XP\Home\ and copy (not move) the following files into the root folder, AIO-DVD. I readme.html I spnotes.html (only found on an SP1 cd)

<http://flyakite.msfnhosting.com/xphomesp1.htm> (3 of 4)3/28/2004 5:41:02 PM Windows XP Home SP1

I win51 I win51ic I win51ic.sp1 (only found on an SP1 cd)

<http://flyakite.msfnhosting.com/xphomesp1.htm> (4 of 4)3/28/2004 5:41:02 PM

Windows Server 2003

Copying the CD Contents

Inside of your SETUP folder which should be in AIO-DVD create a folder called Server2003. eg. - D:\AIO-DVD\SETUP\Server2003\ Inside of this folder create a folder for each edition of Server 2003 that you are including. For my DVD I have DataCenter, Enterprise, Standard, and Web. Copy the entire Server 2003 cds into their corresponding folders. Examples: D:\AIO-DVD\SETUP\Server2003\DataCenter\D:\AIO-DVD\SETUP\Server2003\Enterprise\D:\AIO-DVD\SETUP\Server2003\Standard\D:\AIO-DVD\SETUP\Server2003\Web\ NOTE: For this guide, we will be using Server 2003 Standard for the examples. If adding Enterprise, Data Center, or Web editions just change the necessary elements to fit your needs.

Creating the Boot Folder

Thanks to gosh from the MSFN forums, I have discovered a much better way to obtain the boot files. Go to Start → Run and type or paste the following command with the correct drive letter of course: D:\AIO-DVD\SETUP\Server2003\Standard\i386\winnt32.exe /noreboot Windows Server 2003 setup should come up. Choose "New Installation" and go through the options as usual. Do NOT download updated setup files. At the "Setup Options" screen, click on "Advanced Options" and make sure "copy all installation files from the CD" is checked. If it is grayed out don't worry about it. Setup should create 2 folders in the root of your main drive. They will be hidden so make sure "Show hidden files and folders" is enabled. \$WIN_NT\$.~BT - the boot folder \$WIN_NT\$.~LS - installation files folder Rename \$WIN_NT\$.~BT to 3STD and move the entire folder into the AIO-DVD folder. eg. - D:\AIO-DVD\3STD\ Now in the 3STD folder delete the following files:

<http://flyakite.msfnhosting.com/server2003.htm> (1 of 4) 3/28/2004 5:41:03 PM Windows Server 2003 BOOTSECT.DAT migrate.inf winnt.sif IMPORTANT: Now there's just one last thing we have to do. When we ran setup like we just did, it expects us to be installing a new operating system the next time we reboot, so setup adds an extra boot option in the boot.ini file and changes the default boot choice to it. If you followed the instructions in "Getting Started", you should have made a copy of your boot.ini file. Take this copy, and copy it back over the boot.ini file in the C:\. Don't get rid of your original boot.ini, you will need it again if you plan on using other portions of this guide to add more operating systems. If you don't have a backup of your boot.ini file, you can edit it yourself. This is what it normally looks like if you have Server 2003 installed on the first or only partition of your hard drive: [boot loader] timeout=30 default=multi(0)disk(0)rdisk(0)partition(1)\WINDOWS[operating systems] multi(0)disk(0)rdisk(0)partition(1)\WINDOWS="Windows Server 2003, Standard" /fastdetect I included other Server 2003 versions as well on my DVD and chose to use the following boot folder naming scheme: 3STD - Standard 3ENT - Enterprise 3DCT - Data Center 3WEB - Web

Editing "setupldr.bin"

Let's start modifying some files. First in your 3STD directory open up the file setupldr.bin in Hex Workshop. Under Edit → Replace (Ctrl+H) search for Type: "Text String." We want to find i386 and replace it with 3STD. The screenshot below is just for reference.

<http://flyakite.msfnhosting.com/server2003.htm> (2 of 4) 3/28/2004 5:41:03 PM Windows Server 2003 Click OK and then choose Replace All. It should say "4 Occurrences Replaced." If it does not find 4 occurrences, there may be a problem somewhere. When done, save the file and choose not to back it up.

Editing "txtsetup.sif"

In your 3STD folder find the file txtsetup.sif and open it in NotePad. Choose Edit → Find (Ctrl+F) and search for SetupSourcePath. You will need to change the default “\” to reflect the directory you copied your Server 2003 cd to. In this case it is “\SETUP\Server2003\Standard\” SetupSourcePath = “\SETUP\Server2003\Standard\” <http://flyakite.msfhosting.com/server2003.htm> (3 of 4)3/28/2004 5:41:03 PM Windows Server 2003

Creating the Boot Sector

Now we will need to create the boot sector file that will actually load the text-mode setup for our operating system. Download the 3ALL.zip file. Extract the files and then open 3STD.dat in Hex Workshop. Scroll down until you see the following text in the right hand side. The red text is what we will be replacing. Replace I386 with 3STD. Save the file, choose not to back it up and then place it in the AIO-DVD folder.

Finishing Up

Navigate to your setup folder \AIO-DVD\SETUP\Server2003\Standard\ and copy (not move) the following files into the root folder, AIO-DVD. I readme.html I win51s (Standard only) I win51d (Datacenter only) I win51a (Enterprise only) I win51b (Web only)
<http://flyakite.msfhosting.com/server2003.htm> (4 of 4)3/28/2004 5:41:03 PM

Windows 2000

Copying the CD Contents

Inside of your SETUP folder which should be in AIO-DVD create a folder called 2000. eg. - D:\AIO-DVD\SETUP\2000\ Inside of this folder create a folder for each edition of 2000 that you are including. For my DVD I have AdvServer, Professional, and Server . Copy the entire 2000 cds into their corresponding folders. Examples:D:\AIO-DVD\SETUP\2000\AdvServer\D:\AIO-DVD\SETUP\2000\Professional\D:\AIO-DVD\SETUP\2000\Server\ NOTE: For this guide, we will be using 2000 Professional for the examples. If adding Advanced Server or Server editions just change the necessary elements to fit your needs.

Creating the Boot Folder

If you've already gone through any of the XP sections on this site, you have probably used the method that I discovered from gosh to create the boot folders. However, when creating this DVD from inside of any XP based OS, we cannot go that route. So, there are a few things we can do: * The first and easiest thing you can try is using the boot folders that I am providing from my own DVD. I currently only have boot folders for Professional SP4 and Server SP4. If you use this method, just download the proper zip file and extract the contents into our AIO-DVD folder. Examples:D:\AIO-DVD\2PRO\D:\AIO-DVD\2SRV\ * This method is bit more complicated and time consuming, but it's the best way and

worth it. We CAN use gosh's method as for the XP operating systems, however we must do it from a Windows 2000 installation. I chose to install an ISO image of 2000 Professional in VMware. I then copied the contents of the ISO into a folder on the virtual installation's desktop, and slipstreamed SP4 into the source files. (To move files or folder in or out of VMware and onto your PC, you will need to install VMware tools) Afterwards I ran winnt32.exe from the i386 folder. Windows 2000 setup should come up. Choose "New Installation" and go through the options as usual. Do NOT download updated setup files. At the "Setup Options" screen, click on "Advanced Options" and make sure "copy all installation files from the CD" is checked. If it is grayed out don't worry about it. When it's done do NOT let it reboot. Windows 2000 Setup should create 2 folders in the root of your main drive. They will be hidden so make sure "Show hidden files and folders" is enabled. \$WIN_NT\$.~BT - the boot folder \$WIN_NT\$.~LS - installation files folder Rename \$WIN_NT\$.~BT to 2PRO and move the entire folder out of VMware and into our AIO-DVD folder. eg. - D:\AIO-DVD\2PRO\Now in the 2PRO folder delete the following files: BOOTSECT.DAT migrate.inf winnt.sif * If you have Windows 98 or 2000 already installed on a real computer, copy the entire CD to the desktop. Slipstream SP4 if you want (there are countless guides out there on how to do this). Then run winnt32.exe and follow the instructions in the 2nd paragraph of choice 2. * Find boot disk files for whichever Windows 2000 edition you are using with the right service pack, and extract all of the files into the right boot folders. IMPORTANT: If you used methods 2 or 3, it expects us to be installing a new operating system the next time we reboot, so setup adds an extra boot option in the boot.ini file and changes the default boot choice to it. If you followed the instructions in "Getting Started", you should have made a copy of your boot.ini file. Take this copy, and copy it back over the boot.ini file in the C:\. Don't get rid of your original boot.ini, you will need it again if you plan on using other portions of this guide to add more operating systems. If you don't have a backup of your boot.ini file, you can edit it yourself. This is what it normally looks like if you have 2000 installed on the first or only partition of your hard drive: [boot loader] timeout=30 default=multi(0)disk(0)rdisk(0)partition(1)\WINNT [operating systems] multi(0)disk(0)rdisk(0)partition(1)\WINNT="Windows 2000 Professional " /fastdetect

Editing "setupldr.bin"

Let's start modifying some files. First in your 2PRO directory open up the file setupldr.bin in Hex Workshop. Under Edit → Replace (Ctrl+H) search for Type: "Text String." We want to find i386 and replace it with 2PRO. The screenshot below is just for reference. <http://flyakite.msfnhosting.com/2000.htm> (2 of 4) 3/28/2004 5:41:04 PM Windows 2000 Click OK and then choose Replace All. It should say "3 Occurrences Replaced." If it does not find 3 occurrences, there may be a problem somewhere. When done, save the file and choose not to back it up. Editing "txtsetup.sif" In your 2PRO folder find the file txtsetup.sif and open it in NotePad. Choose Edit → Find (Ctrl+F) and search for SetupSourcePath. You will need to change the default "\" to reflect the directory you copied your XP Pro cd to. In this case it is "\SETUP\2000\Professional\" SetupSourcePath = "\SETUP\2000\Professional\" <http://flyakite.msfnhosting.com/2000.htm> (3 of 4) 3/28/2004 5:41:04 PM Windows 2000

Creating the Boot Sector

Now we will need to create the boot sector file that will actually load the text-mode setup for our operating system. Download the 2ALL.zip file. Extract the file and then open 2PRO.dat in Hex Workshop. Scroll down until you see the following text in the right hand side. The red text is what we will be replacing. Replace I386 with 2PRO. Save the file, choose not to back it up and then place it in the AIO-DVD folder.

Finishing Up

Navigate to your setup folder \AIO-DVD\SETUP\2000\Professional\ and copy (not move) the following files into the root folder, AIO-DVD. | readme.doc | spnotes.htm | cdrom_nt.5 | cdrom_is.5 (2000 Server only) | cdrom_ia.5 (2000 Advance Server only) | cdrom_ip.5 (2000 Professional only)

<http://flyakite.msfhosting.com/2000.htm> (4 of 4)3/28/2004 5:41:04 PM

Windows 98 SE

Copying the CD Contents Inside of your SETUP folder which should be in AIO-DVD create a folder called 98SE. eg. - D:\AIO-DVD\SETUP\98SE\ Copy the entire 98 Second Edition cd to the 98SE folder. Creating the Boot Image Only the NT based operating systems use the boot folder method to startup, so we have to take a slightly different approach for Windows 98. The easiest way to do this is to just download my 98SE.zip file and extract the file within it into your AIO-DVD folder. However, if you'd like to learn how to actually create and edit the image, then please feel free to read on. You will need a Windows 98 SE OEM boot disk or just a Windows 98 OEM boot disk if not using an SE cd. You can find a boot disk for either version here. Extract the .IMA file from the downloaded exe file with WinRAR. WinRAR will give you an error message about the archive being corrupt but ignore it. Editing "autoexec.bat" Now, we need to edit the files autoexec.bat and config.sys. Open the .ima file with WinImage. Drag the files from WinImage to your desktop. Right click autoexec.bat and choose "Edit".

<http://flyakite.msfhosting.com/98se.htm> (1 of 3)3/28/2004 5:41:06 PM Windows 98 SE Edit the

"EXT:" section to show this IF in your "\SETUP\98SE\WIN98\" folder you have a file called oemsetup.exe. :EXT%RAMD%:\extract /y /e /l %RAMD%: ebd.cab > NULecho The diagnostic tools were successfully loaded to drive %RAMD%.echo.LH %ramd%:\MSCDEX.EXE /D:miscd001 /L:%CDROM%echo.clsecho Now installing Windows 98 SEecho.

<http://flyakite.msfhosting.com/98se.htm> (2 of 3)3/28/2004 5:41:06 PM Windows 98 SE echo

Loading...path=%RAMD%:\;a:\;%CDROM%\SETUP\98SE\WIN98\OEMSETUP.EXEecho.GOTO QUIT If your cd does not contain the oemsetup.exe file, then copy that code and edit the bold line to point to your normal setup.exe file. It will more than likely read this:

path=%RAMD%:\;a:\;%CDROM%\SETUP\98SE\SETUP.EXE NOTE: Make sure there is NO extra white space (blank spaces) at the end of your lines in your autoexec.bat file. If you copy and pasted that code there shouldn't be, but double check to make sure. Editing "config.sys" Right click config.sys and choose "Open With...". In the dialog box that comes up click "Open With..." then "Select the program from a list". Now edit the file to show this and ONLY this.

files=10buffers=10dos=high,umbstacks=9,256lastdrive=zdevice=himem.sys

/testmem:offdevice=oakcdrom.sys

/D:miscd001device=btdosm.sysdevice=flashpt.sysdevice=btcdrom.sys

/D:miscd001device=aspi2dos.sysdevice=aspi8dos.sysdevice=aspi4dos.sysdevice=aspi8u2.sysdevice=aspicd.sys /D:miscd001devicehigh=ramdrive.sys /E 2048 Finishing Up Drag the edited autoexec.bat

and config.sys back into WinImage. It will ask if you want to inject the files. Choose "Yes" and then when it asks if you want to replace the existing files. Click "All". Now save the file File → Save and then close WinImage. Rename your file to 98SE.IMA and copy it into your AIO-DVD folder.

<http://flyakite.msfhosting.com/98se.htm> (3 of 3)3/28/2004 5:41:06 PM

Windows ME

Copying the CD Contents Inside of your SETUP folder which should be in AIO-DVD create a folder called ME. eg. - D:\AIO-DVD\SETUP\ME\ Copy the entire Millenium Edition cd to the ME folder. Creating

the Boot Image Only the NT based operating systems use the boot folder method to startup, so we have to take a slightly different approach for Windows 98. The easiest way to do this is to just download my ME.zip file and extract the file within it into your AIO-DVD folder. However, if you'd like to learn how to actually create and edit the image, then please feel free to read on. You will need a Windows ME OEM boot disk. You can find a boot disk here. NOTE: Download the "Windows 98 SE OEM" boot disk (this method is the easiest). Extract the .IMA file from the downloaded exe file with WinRAR. WinRAR will give you an error message about the archive being corrupt but ignore it. Editing "autoexec.bat" Now, we need to edit the files autoexec.bat and config.sys. Open the .ima file with WinImage. Drag the files from WinImage to your desktop. Right click autoexec.bat and choose "Edit". <http://flyakite.msfnhosting.com/me.htm> (1 of 3)3/28/2004 5:41:11 PM Windows ME Edit the "EXT:" section to show this exactly. If the location of your setup.exe file is different, then copy this code for your "EXT:" section and change the line in bold to reflect the location of your file.

```
:EXT%RAMD%:\extract /y /e /l %RAMD%: ebd.cab > NULecho The diagnostic tools were successfully  
loaded to drive %RAMD%.echo.LH %ramd%:\MSCDEX.EXE /D:miscd001 /L:%CDROM%echo.clsecho  
Now installing Windows MEEcho. http://flyakite.msfnhosting.com/me.htm (2 of 3)3/28/2004 5:41:11  
PM Windows ME echo
```

```
Loading...path=%RAMD%:\;a:\;%CDROM%\SETUP\WINME\SETUP.EXEecho.GOTO QUIT NOTE: Make  
sure there is NO extra whitespace (blank spaces) at the end of your lines in your autoexec.bat file. If  
you copy and pasted that code there shouldn't be, but double check to make sure. Editing  
"config.sys" Right click config.sys and choose "Open With...". In the dialog box that comes up click  
"Open With..." then "Select the program from a list". Now edit the file to show this and ONLY this.  
files=10buffers=10dos=high,umbstacks=9,256lastdrive=zdevice=himem.sys
```

```
/testmem:offdevice=oakcdrom.sys
```

```
/D:miscd001device=btosm.sysdevice=flashpt.sysdevice=btcdrom.sys
```

```
/D:miscd001device=aspi2dos.sysdevice=aspi8dos.sysdevice=aspi4dos.sysdevice=aspi8u2.sysdevice  
=aspicd.sys /D:miscd001devicehigh=ramdrive.sys /E 2048 Finishing Up Drag the edited autoexec.bat  
and config.sys back into WinImage. It will ask if you want to inject the files. Choose "Yes" and then  
when it asks if you want to replace the existing files. Click "All". Now save the file File → Save and  
then close WinImage. Rename your file to ME.IMA and copy it into your AIO-DVD folder.
```

<http://flyakite.msfnhosting.com/me.htm> (3 of 3)3/28/2004 5:41:11 PM

ERD Commander 2003

There are many different configurations for ERD Commander 2003, and I am only explaining the way mine is set up. Yours may differ, but hopefully you can use the information here to suite your needs ERD Commander 2003 is a tad different than XP. Basically, it has no setup folder. It's boot folder IS it's setup folder, because ERD runs from the DVD and doesn't actually install anything to a fixed disk. Copying the ERD Commander 2003 Contents Inside of your AIO-DVD folder create a folder called ERD1. eg. - D:\AIO-DVD\ERD1\ Copy the entire contents of the ERD Commander 2003 i386 folder into the ERD1 folder. Your folder contents should look something like this:Contents of D:\AIO-DVD\ERD1\
FONTS HELP INF MSAGENT SYSTEM32 UTILS WINSXS biosinfo.inf ntdetect.com setupldr.bin
spcmdcon.sys txtsetup.sif IF your directory doesn't at least look something like this you need to find
the folder that contains the system32 and winsxs folders. The entire contents of that folder should be
copied straight to the ERD1 directory. Editing "setupldr.bin" Let's start modifying some files. First in
your ERD1 directory open up the file setupldr.bin in Hex Workshop. Under Edit → Replace (Ctrl+H)
search for Type: "Text String." We want to find i386 and replace it with ERD1. The screenshot below is
just for reference. http://flyakite.msfnhosting.com/erd_commander.htm (1 of 4)3/28/2004 5:41:13 PM
ERD Commander 2003 Click OK and then choose Replace All. It should say "4 Occurrences Replaced."
If it does not find 4 occurrences, there may be a problem somewhere. When done, save the file and

choose not to back it up. Editing "txtsetup.sif" In your HOM1 folder find the file txtsetup.sif and open it in NotePad. Choose Edit → Find (Ctrl+F) and search for SetupSourcePath. You will need to change the default "\" to reflect the directory you copied your XP Home cd to. In this case it is "\".

SetupSourcePath = "\" Note: This image is from XP Pro SP1 section. Do NOT change it to show what the picture shows. http://flyakite.msfnhosting.com/erd_commander.htm (2 of 4)3/28/2004 5:41:13 PM

ERD Commander 2003 Creating the Boot Sector Now we will need to create the boot sector file that will actually load the text-mode setup for our operating system. Download the ERD1.zip file. Extract the file and then open ERD1.dat in Hex Workshop. Scroll down until you see the following text in the right hand side. The red text is what we will be replacing. Replace I386 with ERD1. Save the file, choose not to back it up and then place it in the AIO-DVD folder. Finishing Up There's one last thing to do now. We need to copy our cd identification files to the root of our project. The following files need to be copied from your ERD Commander 2003 cd to your AIO-DVD folder: I winbom.ini I win51 I win51ip I win51ip.sp1 Extra Boot Option Thanks to gosh from MSFN for this tip. If you would like to be able to switch cds while using ERD, you have to set up a special boot option that will load ERD Commander 2003 into ram. First of all, create a new folder called ERD2 in AIO-DVD and copy the entire contents of ERD1 into it. http://flyakite.msfnhosting.com/erd_commander.htm (3 of 4)3/28/2004 5:41:13 PM

ERD Commander 2003 Now, edit setupldr.bin to reflect the new folder. Then, edit the "OsLoadOptions" line in txtsetup.sif to read: OsLoadOptions ="/fastdetect /minint /inram" Now, create a copy of the ERD1.DAT file, place it in the AIO-DVD folder and rename it to ERD2.DAT. Open it in Hex Workshop and this time change what now reads ERD1 to ERD2. We also need to setup our boot menu to be able to load ERD. Only do this once you have read through "Creating a Boot Menu" and you are somewhat comfortable with CD Shell. In your "menu:" section you should add something along these lines: Of course edit the code to display whatever you want. print "8) ERD Commander 2003 \n"print "9) ERD Commander 2003 /inram \n" Now in the "MainKey:" section add something along the lines of: if \$lastKey == key[8]; then chain /ERD1.DATif \$lastKey == key[9]; then chain /ERD2.DAT

http://flyakite.msfnhosting.com/erd_commander.htm (4 of 4)3/28/2004 5:41:13 PM

Windows Longhorn 4051

Copying the CD Contents Copy the SOURCES folder from the Longhorn cd into the AIO-DVD folder. eg. - D:\AIO-DVD\SOURCES\ Renaming the CD Shell Folder Longhorn has a separate boot folder already on the cd. This makes things a little easier, except for the fact that it is named BOOT which is what the base folder for the new version of CD Shell is now called. So, we have to rename one of the folders. I've tried renaming the Longhorn boot folder and it is much more complex than I would like to deal with, so we are going to rename the CD Shell folder. Rename the CD Shell folder from BOOT to CDSH. Now copy the BOOT folder from the Longhorn cd into the AIO-DVD folder. Editing "cdsh.bin" In your new CDSH directory open up the file cdsh.bin in Hex Workshop. Under Edit → Replace (Ctrl+H) search for Type: "Text String." We want to find /boot and replace it with /cdsh, as shown in the screenshot below. <http://flyakite.msfnhosting.com/longhorn.htm> (1 of 3)3/28/2004 5:41:14 PM

Windows Longhorn 4051 Click OK and then choose Replace All. It should say "1 Occurrence Replaced." If it finds more than 1 occurrence, there may be a problem somewhere. When done, save the file and choose not to back it up. Editing "loader.bin" In your new CDSH directory open up the file loader.bin in Hex Workshop. Under Edit → Replace (Ctrl+H) search for Type: "Text String." We want to find /boot and replace it with /cdsh, just as in the screenshot above. Click OK and then choose Replace All. It should say "1 Occurrence Replaced." If it finds more than 1 occurrence, there may be a problem somewhere. When done, save the file and choose not to back it up. Creating the Boot Sector

<http://flyakite.msfnhosting.com/longhorn.htm> (2 of 3)3/28/2004 5:41:14 PM

Windows Longhorn 4051 Now we will need to create the boot sector file that will actually load the text-mode setup for our operating system. Download the 4051.zip file. Extract the file and then open 4051.dat in Hex Workshop. Scroll down until you see the following text in the right hand side. The red text is what we

will be replacing. Replace I386 with 4051. Save the file, choose not to back it up and then place it in the AIO-DVD folder. Finishing Up Copy the following files from the Longhorn cd to the AIO-DVD folder. Overwrite any previous files that are there if asked. I readme.htm I win51 I win51ip I winbom.ini <http://flyakite.msfhosting.com/longhorn.htm> (3 of 3)3/28/2004 5:41:14 PM

Adding Unattended

What does Unattended Mean? If you're looking at this section, and this is the first time you've heard anything about unattended installatoin, then you need to check out Creating an Unattended Windows XP CD. How To Okay so great, we've almost got our DVD done, now what if we wanted to add all of our unattended installation files? Well, it's very easy actually. First of all, copy your \$OEM\$ folder to the same directory as your i386 folder, so that they are parallel. Example:D:\AIO-DVD\SETUP\XP\Professional\i386\ D:\AIO-DVD\SETUP\XP\Professional\\$OEM\$ Now, all you have to do is take your winnt.sif answer file and place it into the boot folder for that operating system, which in this example would be PRO1. Multiple OS Boot Options But wait, there is more! Most of us who are taking on a project such as this will probably be using our DVD to help our friends/family/co-workers. So if we are re-installing XP on someone else's computer, we don't want all of our unattended information and programs being installed as well. Luckily, there is a simple fix to this. To allow ourselves to be able to install a regular OS installation or an unattended installation, we will need multiple boot options for that OS. To do this, we must create multiple boot folders and boot sectors. Taking XP as the example, copy the PRO1 folder, paste it back into the AIO-DVD folder and rename it from Copy of PRO1 to PRO2. Do the same thing with PRO1.DAT and rename it to PRO2.DAT. So now we should have two folders and two DAT files with the same contents: D:\AIO-DVD\PRO1\D:\AIO-DVD\PRO2\D:\AIO-DVD\PRO1.DATD:\AIO-DVD\PRO2.DAT

<http://flyakite.msfhosting.com/unattended.htm> (1 of 2)3/28/2004 5:41:17 PM Adding Unattended Now we need to edit setupldr.bin in the PRO2 folder so that all references to PRO1 now point to PRO2, and hex-edit PRO2.DAT so that it points to PRO2 as well. If you want the first boot option to be a regular installation and the second option to be an unattended installation, add your winnt.sif file to the PRO2 folder. All that's left is to add the correct entries to our boot menu so we can select different installation options. The following is an example of what I mean: XP_Pro:print c "\n\cXXMicrosoft Windows XP Professional SP1 Corporate \n"print "1) Regular \n"print "2) Unattended \n" XP_Pro_Key:if \$lastKey == key[1]; then chain /PRO1.DATif \$lastKey == key[2]; then chain /PRO2.DAT <http://flyakite.msfhosting.com/unattended.htm> (2 of 2)3/28/2004 5:41:17 PM

Custom "setup.exe" autorun file

Coming Soon! (Again) <http://flyakite.msfhosting.com/customautorun.htm>3/28/2004 5:41:21 PM

CD Shell Boot Image

Change the CD Shell Boot Image When your DVD boots up CD Shell displays an image for a few seconds and then displays your custom menu. Well this section will help you change that image to whatever you want. In the tools folder that was included in the CD Shell zip file, we will be using the convert.exe program. Before we can convert an image however, we need a BMP file that is 640x480 in size at 24bit color depth. Save this picture into your tools folder. Now, open a command prompt and navigate to tools by typing cd D:\AIO-DVD\BOOT\tools. Then the command you enter to convert

the BMP file is: convert -bmp2csi -o splash.csi logo.bmp Parameters Explained What this does is run the convert.exe program with the following options: -bmp2csi Says we are converting a bmp file to a csi file. -o splash.csi Says to call the new file splash.csi logo.bmp Name of our 640x480 bmp file to convert. Finishing Up Copy your newly created CSI file into the \BOOT\graphics\ folder. It must be named splash.csi to work properly. <http://flyakite.msfnhosting.com/cdshellimage.htm3/28/2004> 5:41:22 PM Partition Magic, Ghost, etc. :: Support Tools :: I would like to thank iCEhOT from the MSFN forums for providing me with the correct way to make these image files. Creating Additional Image Files If you would like to add tools to your DVD such as Partition Magic 8, Ghost, or any other tools that use bootable diskettes it is a simple process. Just follow these steps. 1. Open WinImage. 2. Insert the first floppy disk into your computer. Go to Disk → Read Disk (Ctrl+R) 3. If including a second floppy insert it into your drive. Go to Image → Change format... and select 2.88 MB. Next select Image → Inject... Browse to your floppy drive, select all of the files, and then choose Open. It will ask if you want to inject the files, choose Yes. 4. Now save the file: File → Save. Give the image file a name and save as an IMA file by selecting "Image file (*.IMA)" in the "Save as type:" drop-down box . 5. Once saved, move the file into the AIO-DVD folder if you didn't already save it to there. 6. Create the appropriate entry for your new image file in your boot menu. To access the image files on your DVD you will have to setup boot menu to access the image file. Please consult the "Creating a Boot Menu" section for more information. <http://flyakite.msfnhosting.com/imgfiles.htm3/28/2004> 5:41:23 PM

Creating a Boot Menu

To create our boot menu we will be using CD Shell 2.0.11. If you choose to use the old diskemu.cmd method, you are more than welcome to. However, that method will not be discussed here. There are many benefits to using CD Shell. Directory listing in CD Shell is more organized and clean looking. You can use colors. You can view .txt files without having to open them in the ugly blue DOS "Edit" screen. You can even debug your menus without having to burn a cd or load an ISO into Virtual PC or VMware. You can find my actual CD Shell file in the "Downloads" section. Take a look at my cdshell.ini file while you read through this to get an understanding of how CD Shell scripting works. If you copy this file into your BOOT folder and run the debugger, you can see exactly how my boot menu looks and operates. Don't worry about accidentally running some program, the debugger will not actually execute any files if you choose any of the options, but it gives you an idea of what happens. Here is an example of a possible boot menu created with CD Shell: If you followed the "Getting Started" guide you should have a folder called BOOT in your AIO-DVD directory. The cdshell.ini file is what will contain the code for our menu. Open that file in Notepad or your favorite text editor.

<http://flyakite.msfnhosting.com/bootmenu.htm> (1 of 7)3/28/2004 5:41:25 PM Creating a Boot Menu

About CD Shell Scripting CD Shell uses an extensive scripting language to create the boot menu, much like writing php or java scripts. There is much more it can do than I will be covering in this guide, but I will provide you with the information to get your boot menu up and working. For more information and help with CD Shell please consult the following site:

<http://www.cs.uic.edu/~mter/cdshell/buildcd.html> More documentation is available on that site under Information → Documentation. Creating Sections Sections are used to keep the code clean and organized, and allow commands to jump to certain sections to execute specific code. To create a section type the name of the section followed by a colon. I like to call my very first section menu:.

Keep in mind that code is executed exactly in the order it is listed. So always make sure that after operating system sections to create a key section for that OS. You will see what I mean when we get to Operating System Sections. Examples of sections: boot:xp_pro:moreoptions Printing the Interface clsprint "1) Windows XP Professional SP1 Corporate \n" The cls command will first clear the entire screen before printing text. ALL printed text must be enclosed in quotes. Multiple print commands can be used on a line by using a semicolon (;) after each command. The \n command creates a line return. If we wanted a space between our menu options we would just use \n\n after the first print

brightmagenta, yellow, and white. To highlight specific portions of text with a different color use the `\cXX` and `\cXX` commands. `\cXX` indicates that the text following it is the bold color, and `\cXX` says the text following it reverts back to normal color. If you want to use more colors without having to set the color each time, then `XX` will be replaced with two numbers, the first indicating the background color and the second indicating the text color. So: print "`\cXXThis text is boldcolor. \cXXThis text is normal color.`" Prints "This text is boldcolor" in cyan on black and then prints "This text is normal color." in grey on a black background

Code Color Code Color 0 black 8 grey 1 blue 9 brightblue 2 green A brightgreen 3 cyan B brightcyan 4 red C brightred 5 magenta D brightmagenta 6 brown E yellow <http://flyakite.msfhosting.com/bootmenu.htm> (5 of 7)3/28/2004 5:41:25 PM Creating a Boot Menu 7 brightgrey F white So if you look at the screen shot at the beginning of the guide and the following code you can see what happens: print | "`\cXXPress \c0BF1 \cXXfor Help`"; print r "`\c0Bckite@portraitofakite.com \n`" The word "Press" is printed in cyan on a black background, then "F1" is printed in bright cyan on a black background. "For Help" is printed in the cyan again, and then my e-mail is printed again in the brightcyan color. The End The very last line of your `cdshell.ini` file MUST read end. end That's all. The end command signifies the end of the script and will bring you to a cd shell command prompt. It is much like a dos command prompt but supports more commands and has a nicer directory listing display. Type HELP at the prompt to see all what you can do. Debugging One of the greatest things about `cdshell` is debugging. To debug just double click the file `cdshw.com` in the BOOT folder. This will run a simulation of what the boot process will look like. Don't worry about accidentally installing XP or anything like that, because the debugger does not allow actual commands to be executed. To exit the debugger type exit at the command prompt. If you can't access the command prompt then just `Ctrl+Alt+Del` out. Extra Fun The following code I place as the VERY beginning code in my `cdshell.ini` file. It does a few things: First, it starts off with a boot: section. This section first prints "Press enter to boot from DVD..." before the menu. If Enter is not pressed in 5 seconds, it boots whatever OS is loaded onto the first hard drive and skips the menu. The next two sections are custom functions I wrote to print out the current date and time. An example of this can be seen in the screen shot at the top of this page. <http://flyakite.msfhosting.com/bootmenu.htm> (6 of 7)3/28/2004 5:41:25 PM Creating a Boot Menu boot:clsprint "\n"print "Press Enter to boot from DVD...\n"getkey 5 boot 0x80if \$lastKey == key[enter]; then goto time# When no key found...goto boot # Function to display time of daytime:set hour = \$timeHourset ampm = "am"if \$timeHour > 12; then set hour = \$timeHour - 12if \$timeHour > 12; then set ampm = "pm"set time = "\$hour:\$timeMinute\$ampm" # Function to display datedate:set month = "n/a"if \$dateMonth == 1; then set month = "Jan."if \$dateMonth == 2; then set month = "Feb."if \$dateMonth == 3; then set month = "Mar."if \$dateMonth == 4; then set month = "Apr."if \$dateMonth == 5; then set month = "May."if \$dateMonth == 6; then set month = "Jun."if \$dateMonth == 7; then set month = "Jul."if \$dateMonth == 8; then set month = "Aug."if \$dateMonth == 9; then set month = "Sep."if \$dateMonth == 10; then set month = "Oct."if \$dateMonth == 11; then set month = "Nov."if \$dateMonth == 12; then set month = "Dec."set date = "\$month\$dateDay,\$dateYear" To print the line with the time and date in it I use this piece of code: print c "\n\cXXAA<\c0B\$time \$date\cXX>ÄÄ \n\n" <http://flyakite.msfhosting.com/bootmenu.htm> (7 of 7)3/28/2004 5:41:25 PM

Downloads

PDF Site Versions Creating a Multi-Boot DVD - Updated 03/03/04Creating an Unattended CD - Updated 03/01/04 DAT Files Windows XP Pro SP1Windows XP Home SP1Windows 2000Windows Server 2003ERD Commander 2003 Boot Folders Windows 2000 ProfessionalWindows 2000 Server IMA Files Windows 98 SEWindows ME CD Shell `cdshell.inisplash.csi` Miscellaneous CDIMAGELonghorn "setup.exe" <http://flyakite.msfhosting.com/downloads.htm> (1 of 2)3/28/2004 5:41:29 PM

My DVD Layout

In case some of you are still slightly confused, I have decided to layout how my DVD is setup for you. Hopefully this helps! Folders in bold expand! Just click on them and they will open up. | D:\ m cdimage.exe m makeiso.bat m AIO-DVD n 2PRO n 2SRV n 3DCT n 3ENT n 3STD n 3WEB n BOOT n cdshell.ini n ERD1 n ERD2 n HOM1 n PRO1 n PRO2 n PRO3 n SETUP n 98SE n 2000 n Professional n Server n ME n Server2003 n DataCenter n Enterprise n Standard n Web n XP n Home n Professional n \$OEM\$ n i386 n WINBOM.INI n CDROM_S.40 n CDROM_IP.5 n CDROM_IS.5 n CDROM_NT.5 n 2PRO.DAT n 2SRV.DAT n 3DCT.DAT n 3ENT.DAT n 3STD.DAT n 3WEB.DAT n ERD1.DAT <http://flyakite.msfhosting.com/mydvdlayout.htm> (1 of 2)3/2/2004 8:18:46 PM My DVD Layout n ERD2.DAT n HOM1.DAT n PRO1.DAT n PRO2.DAT n PRO3.DAT n WIN51 n WIN51IA n WIN51IB n WIN51IC n WIN51ID n WIN51IP n WIN51IS n README.HTM n snotes.htm n README.DOC n WIN51IC.SP1 n WIN51IP.SP1 n READ1ST.TXT n SERIALNUMBERS.TXT n CDROMSP4.TST n 98SE.IMA n DOS.IMG n NTFS.IMA n PM8.IMG <http://flyakite.msfhosting.com/mydvdlayout.htm> (2 of 2)3/2/2004 8:18:46 PM

Summary

This section of the site will sum up the basics of setting up NT and non-NT based operating systems for a multi-boot CD or DVD. NT Based Operating Systems Windows XP Pro, XP Home, 2000, NT 4.0, etc. A normal NT based operating system has the i386 folder in the root of the cd. This directory also contains the files necessary to boot that certain OS. When a bootable CD or DVD is made, generally a file named xpboot.bin is used to create the proper boot sector. This is what happens when the disc boots: 1. The bootsector tells the computer to look in i386 for setupldr.bin. 2. setupldr.bin instructs the computer to look for a file called txtsetup.sif in i386. 3. txtsetup.sif contains the information needed to run the text-mode installation for the operating system. When modifying an operating system install for a multi-boot dvd, we must do a few things. 1. A new 4 letter boot folder must be created outside of the folder that the operating system cd was copied to. This folder will contain the files necessary to start the installation of a particular operating system.. 2. setupldr.bin must be edited so that all references to the i386 folder are changed to the new 4 letter boot folder. 3. The "SetupSourcePath=" line in txtsetup.sif must be edited to reflect the location of where we copied the install cd. 4. A new boot sector must be created. The reference to i386 in the boot sector must be changed to the name of our boot folder for our OS. 5. The boot sector is renamed to xxxx.DAT, where xxxx is the name of the boot folder that the boot sector will access (eg. - PRO1.DAT, HOM2.DAT, etc) 6. Put all .DAT files in the root folder, which for this guide is AIO-DVD. Non-NT Based Operating Systems Windows 95, 98 SE, ME, etc. A non-NT based OS generally uses a boot disk inserted into a floppy drive to start the setup for that OS. While there are Windows 98 bootable cds, the boot disk method is the easiest for us to follow. Basic steps for setting up a non-NT based OS: 1. Download a boot disk image or create one from an actual boot disk with WinImage. 2. In WinImage extract the autoexec.bat and config.sys files. 3. Edit autoexec.bat to reflect the location of the setup.exe file. 4. Edit config.sys to include only options for booting from cd. 5. Save file as an .IMA file. <http://flyakite.msfhosting.com/summary.htm> (1 of 2)3/28/2004 5:41:33 PM Summary 6. Copy all .IMA or .IMG files to the root folder, which for this guide is AIO-DVD. <http://flyakite.msfhosting.com/summary.htm> (2 of 2)3/28/2004 5:41:33 PM

Clean Up

For our DVD to work properly we need to do some file cleanup. Cleanup Use the Search feature to search the AIO-DVD folder and ALL subdirectories for the following files: unattended.txt Delete all of these files. bootfix.bin This file is what displays "Press any key to boot from cd...". If you don't want it to display this just delete the file and it will jump right into setup for whichever OS you chose. Otherwise leave it as is. txtsetup.si_ If any exist, these should be deleted. setupldr.bi_ If any exist, these should be deleted. .bak Delete any backup files that may exist.
<http://flyakite.msfhosting.com/cleanup.htm> 3/28/2004 5:41:39 PM

Testing and Burning

Creating the ISO To create our ISO files we will use CDIMAGE. Unfortunately there is no way to add a file to the ISO once it has been created with CDIMAGE. The only thing you can do is create a new ISO each time. If you don't have CDIMAGE you can get it from the Getting Started section or "Downloads". I prefer to keep CDIMAGE in the same directory as my AIO-DVD folder. Example:

D:\cdimage.exe D:\AIO-DVD\ Open a command prompt and navigate to the directory you stored CDIMAGE in. Once there use this command. Please note that it is all on one line. It is only shown on two lines here due to the cell width. Note that I stored my DVD on my D:\, yours may be different.
 start cdimage.exe -lAIODVD -t08/23/2001,09:00:00 -b\AIO-DVD\BOOT\loader.bin -h -n -o -m \AIO-DVD C:\AIODVD.iso Parameters Explained start cdimage.exe Runs the CDIMAGE program with command line arguments. Notice that no exact file location is specified. As long as cdimage.exe is in the same folder as the batch file, it is not needed. -lAIODVD Gives the ISO a label of AIODVD. This can be anything you want. Please note that it is a hyphen then a lowercase L (-l) as in label, not an i or a 1 or anything else. -t08/23/2001,09:00:00 Sets DVD timestamp. Leave as is. -b\AIO-DVD\BOOT\loader.bin Location of our boot sector file, loader.bin. Again, notice no exact folder location is needed as long as our root folder (AIO-DVD) resides in the same location as our batch file. -h -n -o -m Special switches. Leave as is. \AIO-DVD Location of the folder that acts as the root of our DVD. C:\AIODVD.iso Where we want our ISO file stored and what we want to call it. In this case I am calling it customdvd.iso and storing it in my C:\. You MUST have the extension listed. Your target drive where the ISO will be saved must have sufficient space. If not, you will not get an ISO file. Occasionally CDIMAGE will say something along the lines of:

<http://flyakite.msfhosting.com/testingburning.htm> (1 of 3) 3/28/2004 5:41:40 PM Testing and Burning
 WARNING: These two files are identical for the first 65536 bytes, but differ at some point beyond that. This could be intentional, but it might indicate that one of these two source files is corrupt: D:\AIO-DVD\PRO1\SETUPLDR.BIN D:\AIO-DVD\PRO2\SETUPLDR.BIN This is normal. CDIMAGE thinks that these files are supposed to be identical since their contents are almost the exact same. However, we both know that each one specifies a different boot folder and are supposed to be different. Therefore, you can disregard this message. Automate the ISO Creation A good idea is to make a batch file that you can run whenever you want to make the ISO. The following code is only 2 lines in the .bat file. If copied and pasted you shouldn't have a problem. Just modify it to suit your specific needs.
 DEL C:*.ISO start cdimage.exe -lAIODVD -t08/23/2001,09:00:00 -b\AIO-DVD\BOOT\loader.bin -h -n -o -m \AIO-DVD C:\AIO-DVD.iso Testing the ISO VMware 4.0.5 and Virtual PC 2004 are both a great way to test your ISO before burning it, and something that I HIGHLY recommend. Virtual PC 2004 1. Create a New PC. Name it whatever you would like. 2. Choose Guide Me and select Windows XP as the OS. 3. Adjust the memory allocation if you want to. Just keep it at 128+ if possible. 4. Create a new hard disk image and name it whatever you want. 5. Start up the new PC and then choose CD → Capture Image. Find your ISO file. 6. Choose PC → Restart and you should be good to go. VMware 1. Create a New Virtual Machine. 2. Choose "Custom" then choose "Windows XP Professional" as the OS. 3. Adjust the allocated RAM if needed. 4. Set up your Network Connection. I generally choose "Do not use a network connection" because it screws with my internet. 5. Choose "Create a new virtual disk" and then edit the size if you need to. The size is the maximum that it CAN become. If you just test and

install XP and don't need 4.0GB, it won't use 4.0GB, but it can if you need to. So, if you choose to install XP OEMPreinstall and know you will need 6.0GB total for the install, change it. 6. Once done, choose "Edit virtual machine settings". Select the CD-ROM drive and then choose <http://flyakite.msfnhosting.com/testingburning.htm> (2 of 3)3/28/2004 5:41:40 PM Testing and Burning "Use ISO Image". Select your ISO file, hit okay, then start up your virtual machine. Burning the ISO Basically you just need any burner capable of burning an image file. I use Nero 6.3.0.29. Generally I just right-click my ISO file and choose "Open With..." and find the Nero executable. Nero automatically opens up with the Burn dialog. Click Burn and there you go. That's all there is to it! <http://flyakite.msfnhosting.com/testingburning.htm> (3 of 3)3/28/2004 5:41:40 PM

Get Help

Problems Having trouble getting something to work with your DVD? Do you have a question about something not covered here? Ask for help at the MSFN forums, in the Multi-Boot CD/DVD section! It takes less than a minute to sign up! General Are there broken links? Is any information missing? Do you have any comments or suggestions on how to make the site better? If so, then please feel free to e-mail me. You can contact me at flyakite19@hotmail.com. Please be sure to include the words multi-boot in the subject. <http://flyakite.msfnhosting.com/gethelp.htm>3/28/2004 5:41:41 PM

Links

If you know of a link that relates to this site and would like to see it listed here, contact me. MSFN - Where People Go to Know For the latest news in technology, check this site out. Also stop by the forums for any questions you may have. Creating an Unattended CDHave you ever wanted a Windows XP CD that would install Windows XP by automatically putting in your name, product key, timezone and regional settings? Followed by silently installing all your favourite applications along with DirectX 9.0b, .Net Framework 1.1 and then all the Pre-SP2 hotfixes, updated drivers, registry tweaks, and a readily patched UXTheme.dll without any user interaction whatsoever? Then this guide will show you how you can do just that! Windows XP SP1 in 185 MBThe purpose of this guide is to remove Windows components and drivers from the installation CD, in order to save space and increase performance, both during setup and in the installed operating system. This is done by a series of batchfiles that do everything to remove files and prevent setup from displaying any errors. Tech-Hints CD Shell 2.0.11 CD Shell is a scriptable menu system that provides the ability to create interactive multi-boot optical discs. It will make PC-bootable compact discs or DVD's that can select from several program loaders or kernels located on the disc, or boot from other local disk drives that are attached to the system. AutoPlay Media Studio 5.0Build professional autorun CD/DVD ROMs, interactive presentations, custom Windows software, and much more the easy way with AutoPlay Media Studio 5.0 by Indigo Rose Software. This powerful development tool will save you time, save you money, and increase the quality of your output. DrDs Boot DisksHome of the Village Idiot's boot disks, dll's, and more... Bootdisk.comAnother great resource for boot disks.

DVD multiboot avec BCDW

Voici un tutoriel pour créer un CD Multiboot / DVD en utilisant BCDW 2.01a.

En suivant ce guide, vous pouvez ajouter ce que vous voulez.

- 1) Télécharger BCDW 2.01a : <http://www.mediafire.com/file/6bx8wlybtgpz7ai/RescueCD.zip> (cette version est recommandée car améliorée), Extraire le fichier à la racine du disque C, ce qui crée un répertoire C:\RescueCD contenant 5 répertoires et 4 fichiers.
- 2) Pour chaque disque à ajouter (par exemple UBCD, Système Resuce, BartPE etc.), créer un nouveau dossier sur le bureau et lui donner le nom que l'on veut (par exemple un dossier Ubuntu pour Ubuntu, un dossier UBCD pour UBCD). Placer le fichier ISO dans chaque dossier. Extraire le contenu de l'ISO avec, par exemple, 7-Zip. Assurez-vous que l'ISO est toujours là. Si on obtient un dossier [Boot] (différent de boot), il devrait y avoir un fichier appelé Bootable_NoEmulation.img, supprimer ce dossier car on n'en a pas besoin.
- 3) Pour chaque disque qui n'a pas de dossier nommé I386 ou isolinux, vous devez extraire les informations de démarrage. Si le disque a un I386 ou le dossier isolinux passez à l'étape 5.
- 4) Pour extraire les informations de démarrage, on peut utiliser MagicISO, WinISO ou BBIE. Utilisons MagicISO. Le télécharger, l'ouvrir, ouvrir l'ISO puis cliquez sur Tools → Save boot image. La sauvegarder dans le dossier C:\RescueCD en la nommant UBCD.bif pour UBCD, Systemrescue.bif pour System rescue etc.
- 5) Copier tout ce qui a un dossier I386. Si le disque a un dossier appelé I386, tout copier, y compris les dossiers. S'il ya deux disques avec I386, suivre les instructions de http://bootcd.narod.ru/bcdw_e.htm#WinPE.
- 6) Ajouter un dossier avec isolinux. C'est dur. Copier un disque puis, dans isolinux, supprimer isolinux.cfg. S'assurer qu'il n'y est plus. Pour le prochain disque avec isolinux, copier tous les fichiers à partir du fichier isolinux et le mettre dans le dossier dans C:\RescueCD\ . Encore une fois, supprimer le isolinux.cfg. Maintenant, dans le dossier isolinux du dossier RescueCD, il devrait y avoir tous les fichiers du disque original et du deuxième. Continuer de même avec chaque dossier contenant un dossier isolinux. Ne pas oublier de supprimer le fichier isolinux.cfg. C'est tout, tous les disques sont dans le dossier RescueCD.

ouvrir BCDW/bcdw.ini, il devrait ressembler à ceci :

```
[InitOptions]

;PasswordMD5Hash = 5ebe2294ecd0e0f08eab7690d2a6ee69; MD5 Hash of Main
Password (for 'secret' word in this example)
;Logo =
;Font =
;CharSet =
;RootMenu = \BootCat.ini

[MenuItems]

**C:\ ; Boot from drive C:**
**\WNPE\setupldr.bin; Bart's Preinstalled Environment**
**\BCDW\bcdw2dos.ima \VC\vc.com; Volkov Commander**
**\I386\setupldr.bin; Microsoft Windows XP Setup**
**\BCDW\bcdw2dos.ima \WIN9X\setup.exe; Microsoft Windows 98 Setup**
**/linux/isolinux.bin /linux/kernel ramdisk_size=16384
initrd=/linux/rescue.gz root=/dev/ram0 rw; Linux**
**\ACRONIS\tis.iso; Acronis TrueImage Server**
```

```
** :PowerOff ; Power Off**  
** :**  
**\boot\loader.bin; BCDW for CD Shell demo script (\boot)**  
**\cdsh\loader.bin; BCDW for CD Shell demo script (\cdsh)**
```

- `*\bscript\loader.bin; BCDW for Boot Scriptor demo script \bcdw\gfxdemo.ima; BCDW for DOS demo script \floppy.ima ; Password protected option;;; 5ebe2294ecd0e0f08eab7690d2a6ee69 [MenuOptions] ;Blink = 0 ; Blinking: 0 - disable, 1 - enable ;BGColors = 00, 80, 80, 80; Background colors: border, background, top line, bottom line ;BGSymbol = 32 ; Decimal code of background filler: 32, 176, 177, 178 ;TopText = ; Top line text ;BottomText = ; Bottom line text ;MenuPosition = 02, 05, 76, 13; Window Position: X, Y, width, height ;MenuPositionA = 02, 05, 76, 13; Window Position: X, Y, width, height ;MenuColors = f9, 9f, 1f, f0, 0f, fd, f9; Window colors: border, title on got focus, title on lost focus, window content, current line on got focus, current line on lost focus, unacceptable lines ;MenuBorderStyle = 5 ; Border style: 0, 1, 2, 3, 4, 5 ;MenuShadowStyle = 2 ; Shadow style: 0, 1, 2 ;MenuTitle = Options ; Window title ;MenuDefault = 0 ; Index of default boot image ;MenuTimerLabel = Time remaining;; Timer label ;MenuTimer = 30 ; Timer delay in seconds ;HelpPosition = 02, 19, 76, 05; Window position: X, Y, width, height ;HelpPositionA = 02, 19, 76, 05; Window position: X, Y, width, height ;HelpColors = e0, 9f, 1f, e0, 0f, e0; Window colors: border, title on got focus, title on lost focus, window content, current line on got focus, current line on lost focus ;HelpBorderStyle = 5 ; Border style: 0, 1, 2, 3, 4, 5 ;HelpShadowStyle = 2 ; Shadow style: 0, 1, 2 ;HelpTabSkip = 0 ; Skip window while switching by Tab key: 0 - off, 1 - on ;HelpTitle = Help ; Window title ;AboutPosition = 02, 01, 76, 03; Window position: X, Y, width, height ;AboutPositionA = 02, 01, 76, 03; Window position: X, Y, width, height ;AboutColors = e0, 9f, 1f, e0, 0f, e0; Window colors: border, title on got focus, title on lost focus, window content, current line on got focus, current line on lost focus ;AboutBorderStyle = 5 ; Border style: 0, 1, 2, 3, 4, 5 ;AboutShadowStyle = 2 ; Shadow style: 0, 1, 2 ;AboutTabSkip = 0 ; Skip window while switching by Tab key: 0 - off, 1 - on ;AboutTitle = About ; Window title ;AboutText = ~ ; Window content ; BCDW CD ;~ ;ScrollPosition = 79, 00, 01, 01; Window position: X, Y, width, height ;ScrollPositionA = 79, 00, 01, 01; Window position: X, Y, width, height ;ScrollColors = 87, 87, 87, 87, 0f, 87; Window colors: border, title on got focus, title on lost focus, window content, current line on got focus, current line on lost focus ;ScrollBorderStyle = 0 ; Border style: 0, 1, 2, 3, 4, 5 ;ScrollShadowStyle = 0 ; Shadow style: 0, 1, 2 ;ScrollTabSkip = 1 ; Skip window while switching by Tab key: 0 - off, 1 - on ;ScrollMode = 0 ; Window mode: 0 - scroll line, 1 - text window (such as "About CD" window) ;ScrollTitle = ; Window title ;ScrollText = ~ ; Window content ;-/|/-\ ;-/|/-/ ;~ Adapter ce qui est en gras. Pour un disque sans i386 ni isolinux, il suffit de pointer sur le fichier image bootable : /GRUB.bif ; Super Grub S'il y a un répertoire i386 : \i386\setupldr.bin; Microsoft Windows XP Setup Pour le dossier isolinux ouvrir le fichier isolinux.cfg original. Par exemple, dans UBCD ouvrir le fichier isolinux.cfg original. Noter qu'il ne doit pas s'en trouver dans le dossier RescueCD. Le fichier doit ressembler à ceci : DISPLAY startup.msg PROMPT 1 TIMEOUT 100 DEFAULT main ONTIMEOUT boot LABEL boot KERNEL chain.c32 APPEND hd0 LABEL main KERNEL menu.c32 APPEND /menus/main.cfg Cela peut varier selon les versions et les disques. Maintenant, choisir ce qu'on veut booter. Dans ce cas, il y a deux options : LABEL boot KERNEL chain.c32 APPEND hd0 LABEL main KERNEL menu.c32 APPEND /menus/main.cfg utiliser le label main. C'est celui qui est désigné comme par défaut. DEFAULT main Dans le fichier bcdw.ini, ajouter cette ligne : \isolinux\isolinux.bin; Ultimate Boot CD;; /isolinux/menu.c32 APPEND menus_main.cfg`

Pour ce qui concerne isolinux, la première ligne doit pointer vers le fichier isolinux.bin puis une virgule et le nom, puis deux points-virgules, puis le chemin vers le noyau (dans ce cas, le noyau est menu.c32 et le chemin est / isolinux/menu.c32) (on le met dans le dossier isolinux). Ensuite, copie la ligne suivante entière APPEND/menus/main.cfg pour obtenir /isolinux/menu.c32 APPEND / menus / main.cfg

8) Maintenant, pour construire l'ISO, créer le fichier BUILDISO.COMD avec le contenu suivant : mkisofs -J -joliet-long -r -o \RescueCD.iso -b bcdw/loader.bin -no-emul-boot -hide bcdw/loader.bin -boot-load-size 4 . Lancer ce fichier qui se fermera quand l'ISO est fini. Il ne reste plus qu'à tester l'ISO.

Guide du multi-boot

<http://ahmedthemodder.blogspot.com/2009/06/amulti-boot-guide.html> : c'est probablement le guide le plus complet et à jour sur la façon de construire un DVD Multi Boot.

Caractéristiques de ce guide

Création automatique des dossiers et fichiers multi-boot

Installation des logiciels directement à partir du CD ou DVD (pas de copie sur le disque dur → gain de temps)

un seul fichier INSTALL.COMD pour maintenir et mettre à jour tous les logiciels

Déterminer quels logiciels sont installés dans quel OS

Pouvoir utiliser OEMPreInstall = Yes et [GuiRunOnce] dans Winnt.sif pour lancer quelques autres possibilités

Possibilité d'incorporer des drivers à tous les OS que l'on veut, avec une seule copie

Possibilité d'utiliser toutes les méthodes de post-installation que l'on veut (RunOnceEx, kTool, WPI, WIHU, Xplode, etc)

Ce guide est compatible avec les méthodes et les outils suivants

[nLite](#)

[RyanVM](#)

[HFSLIT](#)

[BTS's DriverPacks](#) (Méthode 2 recommandée. De cette façon on n'a qu'une seule copie des pilotes et ils sont incorporés à tous les systèmes d'exploitation.)

[Windows Post-Install Wizard \(WPI\)](#)

[kTool](#)

[WIHU](#)

[Xplode](#)

Ce guide est compatible avec les systèmes d'exploitation suivants

Windows XP SP1

Windows XP SP2

Windows Home

Windows XP Media Center

Windows 2000

Windows Server 2003 (Standard, Enterprise, Web & Data Center)

Windows 98

Avant de commencer

Ce qu'il vous faut :

- du temps et de la patience, ne vous attendez pas à réussir du premier coup
- Divers CD ou ISOs du système d'exploitation
- Suffisant drive space (5+ GB to be safe) (I used +/- 20GB for my DVD)
- [CDImage](#) (GUI'ed version)
- [CD Shell](#)
- [Hex Workshop](#) to hex-edit files.
- Optional - VMware (Shareware), [Virtual PC](#) (Freeware) or [Qemu](#) (Freeware) (for testing purposes)
- Any ISO burning software, like [CDBurner XP](#) (Freeware)

Work on one operating system at a time. Test once you have that operating system added to make sure everything works right, then move onto the next OS. It will save yourself time if something goes wrong and you have no idea where to look. You can only test your DVD once you've passed the "Creating the ISO" section. Good luck!

Let's get started

Let's set up our folder structure

- In your C:\ (or the root of your OS drive) create this folder structure:

DVD\ DVD\BOOT\ DVD\BOOT\TOOLS\ DVD\SETUP\XP\Professional

DVD is the root folder and SETUP will store all of the CDs - Extract the [CD Shell.zip](#) file and move the TOOLS folder into the BOOT folder - Move the BOOT folder into the DVD folder. - Copy all the contents of the XP Pro CD to DVD\SETUP\XP\Professional.

Automatically create multi-boot folders and files (thanks to <http://www.msfn.org/board/Automatically-create-multi-boot-folders-t58446.html>|geitonaki))

- Download geitonaki's [SFX file](#) - Execute it and browse to your DVD folder. When finished it will open create_boot_folders.cmd, modify it to your needs. - It will create the PRO1 boot folder, modify setupldr.bin, modify txtsetup.sif, create the PRO1.bin boot sector and copy the WIN51, WIN51IP and WIN51IP.SP1 (WIN51IP.SP2 if Service Pack 2) tag files. (Notice that PRO1.bin has to have exactly 4 letters UPCASe) CODE call create_boot_folder.cmd C:\DVD\SETUP\XP\Professional C:\DVD PRO1 FOO 0

- Create a text file, inside PRO1, with NotePad, and rename it to winnt.sif. This will make winnt.sif create a tag file that identifies the OS being installed. In this case, the tag file will be XPPRO.TAG, but you can specify whatever you want: QUOTE

```
[GuiUnattended]DetachedProgram="%SystemRoot%\System32\cmd.exe /c @ECHO something>%SystemDrive%\XPPRO.TAG"
```

Creating RunOnce.cmd

- Create a RunOnce.cmd file inside DVD\SETUP\XP\Professional\i386\CMD\ and paste the code in. - RunOnce.cmd looks for Install.cmd on the DVD and calls it. QUOTE @echo off for i in (c d e f g h i j k l m n o p q r s t u v w x y z) do if exist "i:\software\Install.cmd" call %i:\software\Install.cmd exit You can use the RunOnceEx method for this. RunOnceEx only runs at first logon, so applications may need reboot. The method above goes around that, it's "rebootless"!

Launching RunOnce.cmd from Svcpack.inf - Add these lines to svcpack.inf inside DVD\SETUP\XP\Professional\i386\ QUOTE [SetupData]CatalogSubDir="\i386"

```
[SetupHotfixesToRun] CMD\RunOnce.cmd
```

Notes: - Svcpack.inf may come as svcpack.in_, just use the [eXPander](#) utility (thread here) to extract the svcpack.inf inside it, then delete the svcpack.in_. - As you can see Svcpack.inf will launch RunOnce.cmd at T-13 stage. - You'll have to adapt the [ProductCatalogsToInstall] in svcpack.inf according to the new CatalogSubDir="\i386" because it may point to a different location (in which case you'll get an error message during installation). If you don't have any file references under [ProductCatalogsToInstall], then just don't worry about it. - Use the [eXPander](#) utility to transform svcpack.inf back to its compressed svcpack.in_ form, which is smaller (this is optional).

Creating the Install.cmd file

- Create a Install.cmd file inside DVD\SOFTWARE\ and paste in the following: QUOTE @echo off REM next line makes sure the *.TAG extension is identified setlocal enableextensions REM checks for the XPPRO.tag file and go to the corresponding section: if exist %SystemDrive%\XPPRO.TAG call :XPPRO REM checks for the XPPRO2.tag and go to the corresponding section: if exist %SystemDrive%\XPPRO2.TAG call :XPPRO2 REM checks for the SERVER2003.tag file and go to the corresponding section: [if exist %SystemDrive%\SERVER2003.TAG call :SERVER2003 REM End goto :end

:XPPRO REM Here we'll add the software to install to the XP Pro version. Example: REM "%~dp0"

refers to the full path the Install.cmd is in, so you don't have to worry about drive letters start /wait %~dp0\Software\Program1.exe /s start /wait %~dp0\Software\Program2.exe start /wait %~dp0\Software\Program3.exe /qn REM End this section REM end of this section : goto :end

:XPRO2 REM Here we'll add the software to install to the XP Pro Unattended version. Example:

```
[color=#333399]start /wait %~dp0\Software\Program1.exe /s start /wait  
%~dp0\Software\Program2.exe start /wait %~dp0\Software\Program3.exe /qn REG IMPORT  
%~dp0\Software\Tweaks.reg REM End this section REM end of this section : goto :end
```

:SERVER2003 REM Here we'll add the software to install to the Server 2003 version. Example: REG IMPORT %~dp0\Software\Workstation.reg start /wait %~dp0\Software\ProgramA.exe /s start /wait %~dp0\Software\ProgramB.exe REM End this section REM end of this section : goto :end

```
:end REM Here we'll add the options for every OS. start /wait %~dp0\SOFTWARE_ALL\AntiVirus.exe  
start /wait %~dp0\SOFTWARE_ALL\Firewall.exe /s REM Applying tweaks to the registry. Independent  
of the TAG: REG IMPORT %~dp0\Software\Tweaks.reg del /f /q %SystemDrive%\*.TAG del /q /f  
%SystemRoot%\*.bmp del /q /f %SystemRoot%\system32\dllcache\*.scr del /q /f  
%SystemRoot%\system32\setupold.exe del /q /f %SystemRoot%\system32\presetup.cmd exit
```

Install.cmd checks for any tag file and when it finds performs the associated task. As you can see, applications are installed directly from the DVD (not copied to the HD) thus not needing the OEMPreInstall=Yes or [GuiRunOnce] in winnt.sif, that you can still use to launch some more stuff that you may need, and saving time thumbup.gif

Finishing Up

DVD Layout

Ok, now check if your DVD layout is similar to this, if it is, everything is ok. Keep in mind that this is just a sample layout. This layout includes XP Pro and Server 2003, but you may add as many as you like (or as many as it fit's on DVD).

C:\DVD\ - Multi boot DVD Source C:\DVD\BOOT\ - CDShell folder C:\DVD\i386\ - Windows XP Pro reduced source folder (OPTIONAL) C:\DVD\PRO1\ - Boot folder 1 for XP Pro C:\DVD\PRO2\ - Boot folder 2 for XP Pro C:\DVD\3ST1\ - Boot folder 1 for Server 2003 C:\DVD\3ST2\ - Boot folder 2 for Server 2003 C:\DVD\SOFTWARE\SOFTWARE\ - Folder where software is placed C:\DVD\SOFTWARE\Install.cmd - CMD file that takes care of the software installation C:\DVD\SOFTWARE\SOFTWARE_ALL\ - Folder where software for all OSs is placed C:\DVD\SETUP\XP\Professional\i386\CMD\RunOnce.cmd C:\DVD\SETUP\Server2003\Standard\i386\CMD\RunOnce.cmd

Creating a boot menu (CDShell)

It's time to create a boot menu. CD Shell scripting it very simple and I believe that if you read [my example](#) you'll find it very easy to modify to your needs.

Creating the ISO (CDImage)

Now we only need to create the ISO so we can test our DVD. I'll follow the [non-GUI CDImage](#) tutorial, but you can use the [GUI'ed CDImage](#) version if you like. Put the cdimage.exe in the same directory as the DVD:

```
C:\CDImage.exe C:\DVD
```

And automate the process

Make a batch file that you can run whenever you want to make the ISO. To create a batch file open Notepad and paste the below code into it. Save the file as whatever you want and then just change the extension to .bat, like C:\makeiso.bat. QUOTE DEL C:*.ISO start cdimage.exe -IDVD -t01/01/2006,12:00:00 -b\DVD\BOOT\loader.bin -h -n -o -m \DVD C:\AIODVD.iso EXIT Ok, time to test your ISO with VMWare (for example) and add another OS!

Extras

Add an Unattended option

This section will teach you how to add an option which let's you install Windows unattendedly.

- Copy the PRO1 folder and PRO1.DAT file to "Copy of PRO1" and "Copy of PRO1.DAT" - Rename it to PRO2 and PRO2.DAT - Hex-edit PRO2.dat and scroll down until you see "PRO1" in the right hand side. Replace PRO1 with PRO2. - Hex-edit setupldr.bin inside the PRO1 folder and Ctrl+H, then search for Type: "Text String" "PRO1" and replace it with PRO2. - Save the file, choose not to back it up. - Click "OK" and then choose "Replace All". It should say "4 Occurrences Replaced". When done, save the file and choose not to back it up. - Edit winnt.sif to include the unattended options. This may be a good time to read the ref.chm file in Microsoft Deployment Tools, it explains how to set up winnt.sif for an unattended installation. You can use your winnt.sif file to skip some bootings steps of your installation like typing the serial number, defining your language and keyboard or even skip all the steps with the UnattendMode=FullUnattended command. After you created your winnt.sif add these lines to it, so it TAG's the OS being installed: QUOTE
[GuiUnattended]DetachedProgram="%SystemRoot%\System32\cmd.exe /c @ECHO something>%SystemDrive%\XPPRO.TAG" - Ok, so now we have a second boot option. Its time to add that option to the boot menu, so you can actually choose it. Just open up your DVD\BOOT\cdshell.ini and add these lines to it: QUOTE XP_Pro: print c "\n\cXXMicrosoft Windows XP Professional \n" print "1) Regular \n" print "2) Unattended \n"

```
XP_Pro_Key: if $lastKey == key[1]; then chain /PRO1.DAT if $lastKey == key[2]; then chain /PRO2.DAT
```

Add Windows 98

Follow [this guide](#), by chon_.

Add Drivers

Follow [this guide](#), by a06lp.

Additional Resources

* [Setup Billboard Screens](#) (or learn how to make your own [here](#)). * Microsoft Deployment Tools at [Microsoft](#) and [Rapidshare](#). They contain the ref.chm file that has info for WINNT.SIF configuration, along with other utilities.

Explanation of how it all works

Understanding The Boot Process

* CD Shell lets you choose which XXXX.DAT boot sector to access (located on the DVD root) * The boot sector (PRO1.DAT for example) says where to load the SETUPLDR.BIN file (located in each of the boot folders) * SETUPLDR.BIN has instructions on where to access txtsetup.sif (on the same folder) which accesses the appropriate DVD\SETUP\XX folder and starts the text-mode setup for Windows

Timeline

* **T-39** - Depending on the boot folder, winnt.sif's DetachedProgram creates a tag file identifying the OS. * **T-13** - Svcpack.inf launches the RunOnce.cmd inside ...\\i386\CMD\ of every OS. Install.cmd checks for the tag file and then performs that TAG's associated task.

Guide pour débutants pour les disques multi-boot

<http://ahmedthemodder.blogspot.com/2009/06/beginners-guide-to-multi-boot-discs.html>

Cette section du forum porte sur les CDs et DVDs multi-boots.

Ce petit mémento couvre la plupart des questions les plus fréquemment posées (FAQ) sur le sujet.

Exemple : le genre de disques que vous avez vu en la possession d'administrateurs système occupés, ou pour maintenir des PCs diversement configurés. Un CD ou DVD unique, avec plusieurs OS ou plusieurs versions d'un même OS est un disque "multi-boot". Il est ainsi appelée parce qu'il contient de multiples secteurs d'amorçage, extraits de divers CD ou disquettes, que l'on peut choisir au démarrage. Ainsi, on peut se demander comment configurer un DVD avec, disons, Windows 2000 et

Windows XP en pouvant ensuite choisir dans un menu de boot ce qu'il faut installer.

Normalement, on met 2 ou plusieurs types d'installation de Windows XP ou 2000 sur un disque quand ils font un disque multi-boot. Ou encore mettre toutes les 5 versions de Windows sur un seul DVD. La seule limite est la capacité du média. Deux approches pour résoudre ce problème :

simplement utiliser un DVD,

ou "[optimiser](#)" l' image ISO pour la réduire et qu'elle tienne sur un CD.

La méthode est la même pour un CD ou un DVD, la seule différence étant que le DVD a une plus grande capacité.

Il faut normalement effectuer des tests multiples du disque avant de pouvoir confirmer qu'il fonctionne comme prévu. On peut simplement extraire le secteur d'amorçage à partir d'un CD pour le placer en option sur le disque, ou faire une image de la disquette bootable d'un outil bootable de diagnostic et l'ajouter à la liste. Ajouter Linux comme une option à votre DVD multi-boot est un peu plus difficile que d'ajouter les OS Windows et les disques de démarrage.

Pour faire un menu de disque multi-boot, on peut utiliser soit [CDshell](#) ou [EasyBoot](#). Utiliser un CD ré-inscriptible pour les tests des CDs multi-boots (et des configurations sans surveillance). Mais le mieux est de faire une image ISO de ce que vous allez graver sur un disque et d'utiliser une machine virtuelle comme [VMware](#) ou [VirtualPC](#) pour les tests.

Voici un [guide](#) pour vous aider à démarrer (comment configurer un DVD multi-boot à partir de zéro) - dans la plupart des cas, c'est suffisant.

Pour faire un disque multi-boot, il vaut mieux se documenter sur la façon dont les systèmes d'exploitation s'installent et démarrent à partir de leur support d'installation.

<note>[Articles importants](#) Faire un multi-boot nécessite parfois des méthodes d'[installation de windows sans assistance](#).

[nLite](#) pour réduire la taille du CD d'installation de Windows

[WinPE](#) pour accélérer l'installation de Windows </note>

From:

<https://www.nfrappe.fr/doc-0/> - **Documentation du Dr Nicolas Frappé**

Permanent link:

https://www.nfrappe.fr/doc-0/doku.php?id=tutoriel:os:multiboot:dvd:en_vrac

Last update: **2022/08/13 22:15**

